

Sea-Dog Aluminum Vertical Switch Panel #422110-1 Installation Instructions

Marine Grade Aluminum Panel with 6 Illuminating Switches and 6 Fuse Holders.

Includes 8 Fuses: (2) 3 Amp, (4) 5 Amp, and (2) 10 Amp.

Customize with Included Labels.

1. Connect the positive terminal of the battery (12V only) to the bar identified with a "+" tag.
2. Connect the negative terminal of the battery (or ground) to the bar identified with a "-" tag.
3. Connect the positive wire of each individual circuit to the #2 spade on the corresponding rocker switch on the panel.
4. Connect the remaining wire or negative wire of each circuit to the common ground of the boat, if so equipped, or directly to the negative terminal of the battery or the negative bar of the panel.

NOTE: Do not attach any additional wires to the remaining terminal on the fuse holder.

5. Your Sea-Dog switch panel is supplied with 8 fuses - (2) 3A, (4) 5A and (2) 10A. (WARNING: Do not use fuse rated over 10A).
6. To remove the fuse holder cap, see figure 2 below.

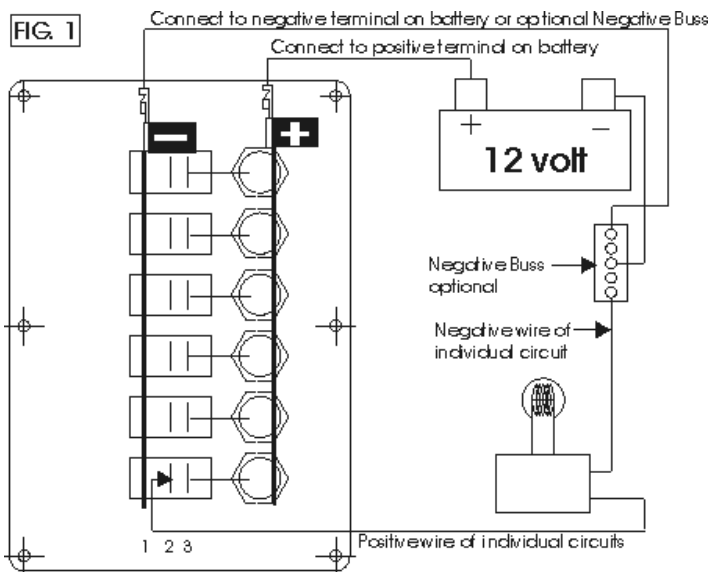
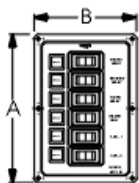
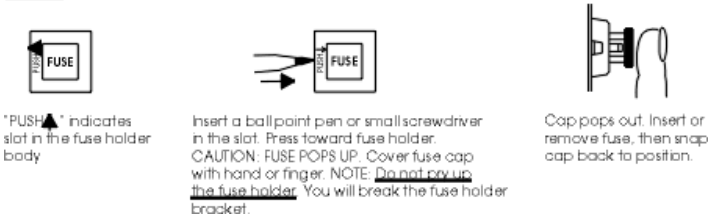
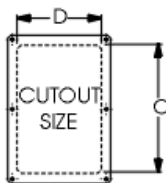


FIG. 2



A - 6-1/2"
B - 4-1/2"



C - 5-1/2"
D - 3-1/2"

- OP42201-1 Replacement Insert for Fuse Holder
- 420501-1 Replacement Fuse Holder - Complete
- 420441-1 Replacement Rocker Switch