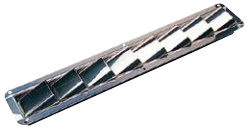


7

-
- | | |
|--------------------|----------------|
| Vents | Drains |
| Collector Boxes | Deck Fills |
| Pitot Tube Shields | Deck Fill Keys |
| Deck Plates | Gas Tank Vents |
| Deck Plate Keys | Ski Tows |
| Hose Adapters | |

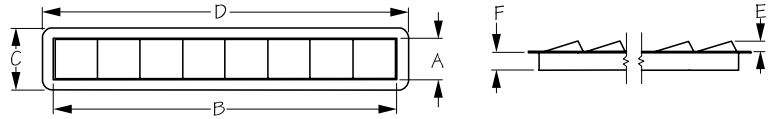
Vents & Fuel Fittings





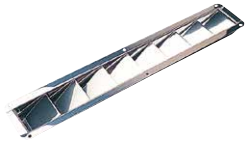
LOUVERED VENT

Stamped 316 Stainless Steel



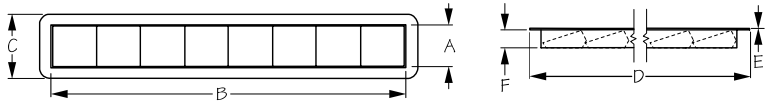
Bulk	Display	A (Cutout Size)	B	C (Overall Size)	D	E	F	Fastener	Wt.(lb.)	Std. Pack
331200	n/a	1-7/8"	15-1/4"	2-7/8"	16-3/8"	5/8"	7/8"	#6 RH	.95	1 ea

This Louvered Vent is designed to be used in conjunction with a collector box to facilitate air intake and exhaust. Constructed of corrosion resistant 316 stainless steel. Installs with six #6 RH fasteners (not included). Vent area 9.74 in².



RECESSED LOUVERED VENT

Stamped 316 Stainless Steel



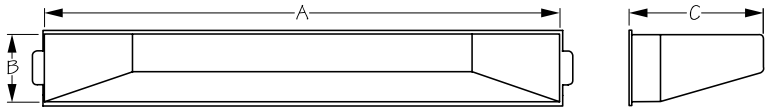
Bulk	Display	A (Cutout Size)	B	C (Overall Size)	D	E	F	Fastener	Wt.(lb.)	Std. Pack
331201	n/a	1-7/8"	15-1/4"	2-7/8"	16-3/8"	1/32"	7/8"	#6 RH	.67	1 ea

This Recessed Louvered Vent is designed to be used in conjunction with a collector box to facilitate air intake and exhaust. Recessed louvers create a flush surface area, reducing possible damage to the vent as well as preventing chafing to mooring lines, fishing lines, etc. Constructed of corrosion resistant stamped 316 stainless steel. Installs with six #6 RH fasteners (not included). Vent area 7.6 in².



COLLECTOR BOX

Injection Molded Polypropylene



Bulk	Display	A	B	C	Hose Size	Vent Area	Wt.(lb.)	Std. Pack
331202	n/a	15-1/2"	2"	4"	None	None	.20	5 ea
331203	n/a	15-1/2"	2"	4"	3" (2)	12.80 in ²	.18	5 ea
331204	n/a	15-1/2"	2"	4"	4" (1)	9.10 in ²	.18	5 ea

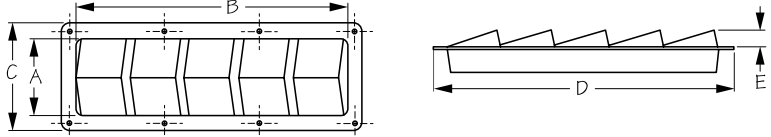
These Collector Boxes are designed to be used in conjunction with a louvered vent to facilitate air intake and exhaust. For use with either the stainless Louvered Vents (331200 or 331201) or injection molded ABS Louvered Vents (337210 or 337211). Constructed of injection molded polypropylene. Interchangeable with Attwood® part numbers 1341 and 1342. 331202 is available without holes to allow for custom installations.

⚠WARNING: Cancer and Reproductive Harm - www.P65Warnings.ca.gov



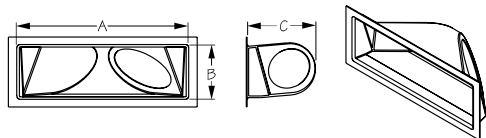
LOUVERED VENT

Stamped 316 Stainless Steel



Bulk	Display	Louvers	A (Cutout Size)	B	C (Overall Size)	D	E	Vent Area	Wt.(lb.)	Std. Pack
331280	n/a	10	3-5/8"	19-7/8"	4-1/2"	20-7/8"	13/16"	24.21 in ²	1.52	1 ea
n/a	331290-3	5	3-5/8"	12"	4-1/2"	12-7/8"	13/16"	11.65 in ²	1.03	1 ea
331300	n/a	3	3-5/8"	7-1/8"	4-1/2"	8-1/8"	13/16"	6.63 in ²	.66	1 ea

These Louvered Vents are designed to be used in conjunction with a collector box to facilitate air intake and exhaust. 331290-3 and 331300 can be used in conjunction with ABS Collector Boxes (331293-331298). 331280 does not have a collector box available. Constructed of corrosion resistant stamped 316 stainless steel.



COLLECTOR BOX

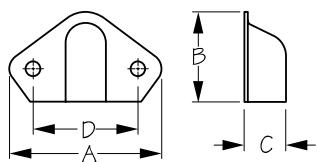
Vacuum Formed ABS



Bulk	Display	Hose Size	A	B	C	Mounting	Vent Area	Wt.(lb.)	Std. Pack
331293	n/a	3"	12-1/4"	3-5/8"	5"	Right	5.29 in ²	.25	5 ea
331294	n/a	4"	12-1/4"	3-5/8"	5"	Right	9.68 in ²	.26	5 ea
331296	n/a	3"	12-1/4"	3-5/8"	5"	Left	5.29 in ²	.23	5 ea
331298	n/a	4"	12-1/4"	3-5/8"	5"	Left	9.68 in ²	.22	5 ea

These Collector Boxes are designed to be used with a louvered vent to facilitate air intake and exhaust. The collector boxes are available with either a 3" or 4" hose attachment hole (friction fit Spiral wire hose) and left hand or right hand hose hole options as viewed from the rear side. For use with either stainless Louvered Vent (331290) or injection molded ABS Louvered Vent (337290). Constructed of impact resistant vacuum formed ABS. 3" hose vent area 5.29 in². 4" hose vent area 9.68 in².

⚠WARNING: Cancer and Reproductive Harm - www.P65Warnings.ca.gov



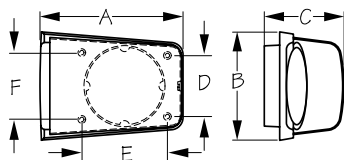
PITOT TUBE SHIELD

Stamped 304 Stainless Steel



Bulk	Display	A	B	C	D	Wt.(lb.)	Std. Pack
331310	331310-1	1-1/4"	3/4"	3/8"	7/8"	.01	10 ea

Designed to be vertically mounted, the Pitot Tube Shield protects electrical wiring when passing through transom holes. Ideal for use with depth sounders, speedometers, and coaxial cables. Constructed of corrosion resistant stamped 304 stainless steel for durability.



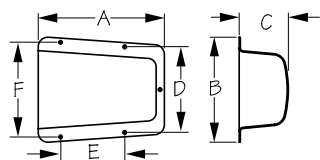
COWL VENT WITH BASE

Stamped 304 Stainless Steel/Plastic



Bulk	Display	A	B	C	D	E	F	Fastener	Wt.(lb.)	Std. Pack
331320	331320-1	5-7/8"	4-7/16"	3-5/16"	2-1/2"	3-9/16"	2-3/4"	#8 FH	.52	1 ea

Cowl Vents provide fresh air below decks by trapping air that comes across the top deck and forcing it into your boat's cabin interior. Designed for use with a 3" or 4" ventilation hose. Constructed of corrosion resistant stamped 304 stainless steel with a black plastic base. Installs with four FH fasteners (not included).



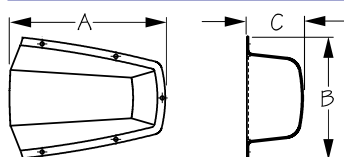
COWL VENT

Stamped 304 Stainless Steel



Bulk	Display	A	B	C	D	E	F	Fastener	Wt.(lb.)	Std. Pack
331330	331330-1	5-3/4"	4-13/16"	2-5/16"	3-15/16"	3-1/8"	4-5/16"	#8 RH	.45	1 ea

Cowl Vents provide fresh air below decks by trapping air that comes across the top deck and forcing it into your boat's cabin interior. Constructed of corrosion resistant stamped 304 stainless steel. Installs with four #8 FH fasteners (not included).



CLAM SHELL VENT - MINI

Stamped 304 Stainless Steel



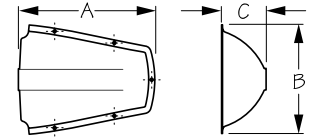
Bulk	Display	A	B	C	Vent Area	Fastener	Wt.(lb.)	Std. Pack
331335	331335-1	5"	4-1/2"	2"	4.51 in ²	#6 RH	.40	1 ea

This Mini Clam Shell Vent provides splash protection for vent holes, wire and cable runs, or blower-exhaust hose openings. Can be used for cabin ventilation with the addition of a dorade box. Ideal for applications where a taller vent would foul lines or restrict crew movement. Constructed of corrosion resistant 304 stamped stainless steel. Installs with five #6 RH fasteners (not included).



CLAM SHELL VENT

Stamped 304 Stainless Steel



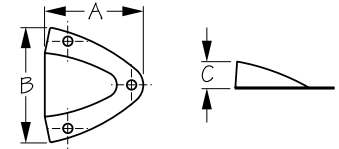
Bulk	Display	A	B	C	Vent Area	Fastener	Wt.(lb.)	Std. Pack
331340	331340-1	7"	5-3/4"	2-1/4"	7.51 in ²	#6 RH	.58	1 ea / 10 ea
331350	331350-1	7-1/2"	6-3/4"	2-7/8"	12.02 in ²	#6 RH	.79	1 ea / 10 ea

This Clam Shell Vent provides splash protection for vent holes, wire/cable runs, or blower-exhaust hose openings. Can be used for cabin ventilation with the addition of a dorade box. Ideal for applications where a taller vent would foul lines or restrict crew movement. Constructed of corrosion resistant 304 stamped stainless steel. Installs with five #6 RH fasteners (not included).



MIDGET VENT

Stamped 304 Stainless Steel



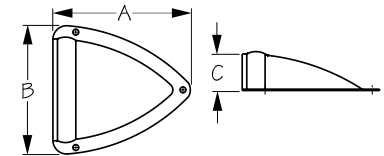
Bulk	Display	A	B	C	Vent Area	Fastener	Wt.(lb.)	Std. Pack
331360	331360-1	1-5/8"	1-3/4"	1/2"	.29 in ²	#6 RH	.01	10 ea
331370	331370-1	2-1/4"	2-1/8"	5/8"	.52 in ²	#6 RH	.03	10 ea

These Midget Vents provide a splash proof opening through transoms, cabin sides, etc. Great for routing cables and wires or for covering thru-hull openings to shield water spray. Ideal for small lockers, they provide attractive cover for ventilation holes while also preventing odors. Constructed of corrosion resistant stamped 304 stainless steel. Installs with three #6 RH fasteners (not included).



MIDGET VENT - HEAVY DUTY

Stamped 304 Stainless Steel



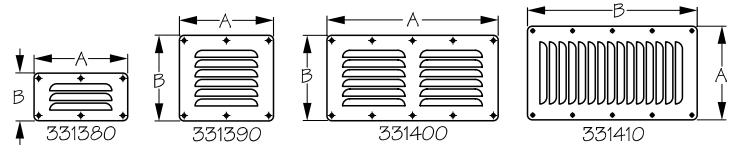
Bulk	Display	A	B	C	Vent Area	Fastener	Wt.(lb.)	Std. Pack
331375	331375-1	3-3/4"	3-1/2"	15/16"	1.25 in ²	#6 RH	.12	10 ea

This Heavy Duty Midget Vent features a reinforced rim, making them durable enough to stand on. Great for routing cables or wires through a hole or for covering thru-hull openings to shield water spray. Ideal for small lockers, they provide attractive cover for ventilation holes while also preventing odors. Constructed of corrosion resistant stamped 304 stainless steel. Installs with three #6 RH fasteners (not included).



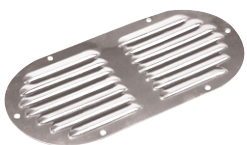
LOUVERED VENT

Stamped 304 Stainless Steel



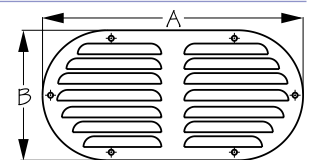
Bulk	Display	A	B	Vent Area	Fastener	Wt.(lb.)	Std. Pack
331380	331380-1	5"	2-5/8"	.81 in ²	#6 RH	.11	10 ea
331390	331390-1	5"	4-5/8"	1.62 in ²	#6 RH	.18	10 ea
331400	331400-1	9-1/8"	4-5/8"	3.24 in ²	#6 RH	.35	10 ea
331410	331410-1	5"	9"	4.05 in ²	#6 RH	.40	10 ea

These Louvered Vents are designed to promote air circulation and prevent mold, mildew, and unpleasant odors. Ideal for cabin doors, lockers, dock boxes, etc. Constructed of corrosion resistant stamped 304 stainless steel. Installs with #6 RH fasteners (not included). 331380 pictured.



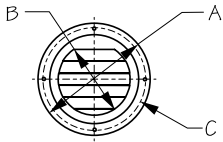
LOUVERED VENT - OVAL

Stamped 304 Stainless Steel



Bulk	Display	A	B	Vent Area	Fastener	Wt.(lb.)	Std. Pack
331405	331405-1	9-1/8"	4-5/8"	2.94 in ²	#6 RH	.32	10 ea

This Oval Louvered Vent is designed to promote air circulation and prevent mold, mildew, and unpleasant odors. Ideal for cabin doors, lockers, dock boxes, etc. Constructed of corrosion resistant stamped 304 stainless steel. Installs with six #6 RH fasteners (not included). Vent area 2.94 in².



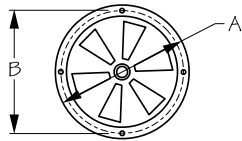
ROUND LOUVERED VENT

Stamped 304 Stainless Steel



Bulk	Display	A	B (Hole Size)	C	Vent Area	Fastener	Wt.(lb.)	Std. Pack
331424	331424-1	4"	2-1/2"	3-5/8"	.88 in ²	#6 FH	.07	10 ea
331425	331425-1	5"	3-1/2"	4-1/2"	2.02 in ²	#6 FH	.13	10 ea

These Round Louvered Vents allow air in while keeping water out. Constructed of corrosion resistant stamped 304 stainless steel. Installs with four #6 FH fasteners (not included). 4" vent area 0.88 in². 5" vent area 2.02 in².



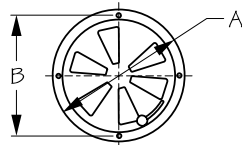
BUTTERFLY VENT - CENTER KNOB

Stamped 304 Stainless Steel



Bulk	Display	A	B	Vent Area	Fastener	Wt.(lb.)	Std. Pack
331440	331440-1	4"	3-5/8"	2.77 in ²	#6 RH	.16	10 ea
331450	331450-1	5"	4-3/4"	2.91 in ²	#6 RH	.29	10 ea

These Butterfly Vents feature a Center Knob that allows for easy adjustment of the opening. Promotes air circulation and prevents mold, mildew, and associated odors. Constructed of corrosion resistant 304 stainless steel. Installs with four #6 RH fasteners (not included).



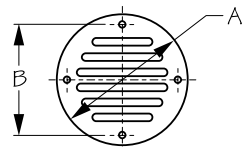
BUTTERFLY VENT - SIDE KNOB

Stamped 304 Stainless Steel



Bulk	Display	A	B	Vent Area	Fastener	Wt.(lb.)	Std. Pack
331455	n/a	5"	4-3/4"	2.89 in ²	#6 RH	.29	10 ea

These Butterfly Vents features a Side Knob that allows for easy adjustment of the opening. Promotes air circulation and prevents mold, mildew, and associated odors. Constructed of corrosion resistant 304 stainless steel. Installs with four #6 RH fasteners (not included).



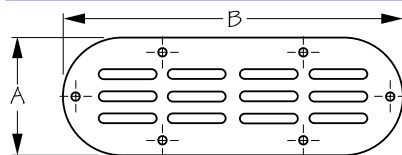
DRAIN COVER

Stamped 304 Stainless Steel



Bulk	Display	A	B	Vent Area	Fastener	Wt.(lb.)	Std. Pack
331600	331600-1	3-1/4"	2-3/4"	2.11 in ²	#6 RH	.06	10 ea
331601	331601-1	2-1/2"	2-1/8"	.85 in ²	#6 RH	.04	10 ea

These Drain Covers are constructed of stamped 304 stainless steel. Installs with four #6 RH fasteners (not included).



LOCKER VENT

Stamped 304 Stainless Steel



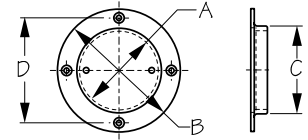
Bulk	Display	A	B	Vent Area	Fastener	Wt.(lb.)	Std. Pack
331620	331620-1	2-3/8"	6-3/4"	2.56 in ²	#8 RH	.10	10 ea

This Locker Vent promotes air circulation in interior areas and prevent mold, mildew, and unpleasant odors. Constructed of corrosion resistant stamped 304 stainless steel. Installs with six #8 RH fasteners (not included). Vent area 2.56 in².



DECK PLATE

Investment Cast 316 Stainless Steel



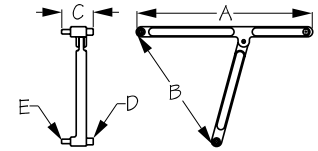
Bulk	Display	A	B	C	D	Fastener	Wt.(lb.)	Std. Pack
335653	335653-1	3-1/4"	4-11/16"	3-1/2"	4"	#12 FH	1.05	1 ea
335654	335654-1	4-3/16"	5-9/16"	4-1/2"	4-13/16"	#12 FH	1.50	1 ea

These Deck Plates can be opened with Deck Plate Keys (335680 or 335699, not included). Use anti-seize lubricant to protect threads from galling. Constructed of corrosion resistant investment cast 316 stainless steel. Installs with four #12 FH fasteners (not included).



ADJUSTABLE DECK PLATE KEY

Sand Cast Bronze



Bulk	Display	A	B	C	D	E	Wt.(lb.)	Std. Pack
335680	335680-1	7-3/4"	6"	1-3/8"	5/16"	3/16"	.68	5 ea

The Adjustable Deck Plate Key opens to a maximum of 6" and comes with two sizes of stainless steel pins (3/16" and 5/16") to accommodate most plates or caps. Features a drilled hole in the handle to attach an optional lanyard. Constructed of sand cast bronze.

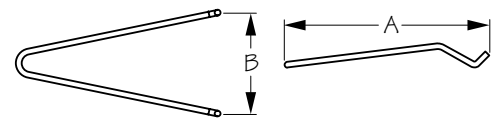
- Heavy duty construction
- Great addition to every tool box
- Corrosion resistant

⚠WARNING: Cancer and Reproductive Harm - www.P65Warnings.ca.gov



DECK PLATE/FILL KEY

Formed 304 Stainless Steel



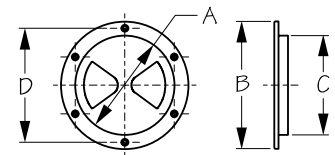
Bulk	Display	A	B	Wt.(lb.)	Std. Pack
335699	335699-1	7"	3-7/16"	.14	10 ea

This Deck Plate/Fill Key is adjustable and fits all Sea-Dog® two-prong Deck Fills and Deck Plate Caps, as well as most competitor's caps. For use with Deck Fills (351320-351331 and 351350-351353). Constructed of corrosion resistant formed 304 stainless steel.



SCREW-OUT DECK PLATE

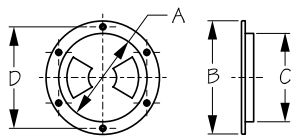
Injection Molded Polypropylene



Bulk	Display	A	B	C	D	Color	Fastener	Wt.(lb.)	Std. Pack
335740	335740-1	4-7/16"	5-3/4"	4-1/2"	5-1/8"	White	#8 FH	.19	10 ea / 5 ea
n/a	335745-1	4-7/16"	5-3/4"	4-1/2"	5-1/8"	Black	#8 FH	.19	5 ea
n/a	335750-1	5-7/16"	6-3/4"	5-1/2"	6-1/8"	White	#8 FH	.25	5 ea
n/a	335755-1	5-7/16"	6-3/4"	5-1/2"	6-1/8"	Black	#8 FH	.25	5 ea
335760	335760-1	6-1/2"	8-1/8"	6-1/2"	7-3/8"	White	#8 FH	.44	10 ea / 5 ea
n/a	335765-1	6-1/2"	8-1/8"	6-1/2"	7-3/8"	Black	#8 FH	.44	5 ea

These Screw-Out Deck Plates are molded to the highest standards. Keep threads clean with hot, soapy water. Lubricate with Vaseline or Teflon grease. Constructed of UV resistant and antioxidant injection molded polypropylene. Installs with six #8 FH fasteners (not included). When installing, use silicone sealant on hull or deck surface. Available in black or white.

⚠WARNING: Cancer and Reproductive Harm - www.P65Warnings.ca.gov



QUARTER-TURN DECK PLATE

Injection Molded ABS

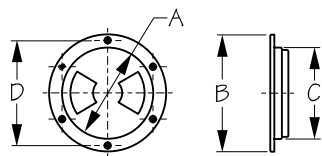


Bulk	Display	A	B	C	D	Color	Lid Texture	Fastener	Wt.(lb.)	Std. Pack
336140	336140-1	4-1/2"	6-1/8"	4-1/2"	5-3/8"	White	Smooth	#8 FH	.28	10 ea
336140G	n/a	4-1/2"	6-1/8"	4-1/2"	5-3/8"	Gray	Smooth	#8 FH	.28	10 ea
336145	336145-1	4-1/2"	6-1/8"	4-1/2"	5-3/8"	Black	Smooth	#8 FH	.28	10 ea
336150	336150-1	5-1/2"	6-3/4"	5-3/8"	6-1/8"	White	Smooth	#8 FH	.32	10 ea
336152	336152-1	5-1/2"	6-3/4"	5-3/8"	6-1/8"	White	Textured	#8 FH	.32	10 ea
336155	336155-1	5-1/2"	6-3/4"	5-3/8"	6-1/8"	Black	Smooth	#8 FH	.32	10 ea
336157	336157-1	5-1/2"	6-3/4"	5-3/8"	6-1/8"	Black	Textured	#8 FH	.32	10 ea
336160	336160-1	6-1/2"	8-1/8"	6-1/2"	7-3/8"	White	Smooth	#8 FH	.41	10 ea
336162	336162-1	6-1/2"	8-1/8"	6-1/2"	7-3/8"	White	Textured	#8 FH	.42	10 ea
336165	336165-1	6-1/2"	8-1/8"	6-1/2"	7-3/8"	Black	Smooth	#8 FH	.41	10 ea
336167	336167-1	6-1/2"	8-1/8"	6-1/2"	7-3/8"	Black	Textured	#8 FH	.42	10 ea
336180	336180-1	8-5/16"	9-7/8"	8-1/4"	8-15/16"	White	Smooth	#8 FH	.55	5 ea
336182	336182-1	8-5/16"	9-7/8"	8-1/4"	8-15/16"	White	Textured	#8 FH	.56	5 ea
336185	336185-1	8-5/16"	9-7/8"	8-1/4"	8-15/16"	Black	Smooth	#8 FH	.55	5 ea
336187	336187-1	8-5/16"	9-7/8"	8-1/4"	8-15/16"	Black	Textured	#8 FH	.56	5 ea
337198	337198-1	Deck plate lanyard - 12"							.01	10 ea / 5 ea
337199	n/a	Lid retaining strap - 8"							.01	10 ea

These Quarter-Turn Deck Plates feature a new locking system that prevents over tightening, jamming, or cross threading. Easy to open and close. A specially engineered lubricated gasket is used in conjunction with a knife edge for a leak tested seal. Avoid contact with acetone or strong solvents. Constructed of UV resistant injection molded ABS. Installs with six #8 FH fasteners (not included). Available in black or white, smooth or textured. Patent Pending.

- Special Order Requirements May Apply
- Custom Colors Available With Large Order

▲WARNING: Cancer and Reproductive Harm - www.P65Warnings.ca.gov



QUARTER-TURN DECK PLATE WITH INTERNAL COLLAR

Injection Molded ABS



Bulk	Display	A	B	C	D	Color	Lid Texture	Fastener	Wt.(lb.)	Std. Pack
336340	336340-1	4-1/2"	6-1/8"	4-1/2"	5-3/8"	White	Smooth	#8 FH	.28	10 ea
336345	336345-1	4-1/2"	6-1/8"	4-1/2"	5-3/8"	Black	Smooth	#8 FH	.28	10 ea
336350	336350-1	5-1/2"	6-3/4"	5-3/8"	6-1/8"	White	Smooth	#8 FH	.32	10 ea
336352	336352-1	5-1/2"	6-3/4"	5-3/8"	6-1/8"	White	Textured	#8 FH	.32	10 ea
336355	336355-1	5-1/2"	6-3/4"	5-3/8"	6-1/8"	Black	Smooth	#8 FH	.32	10 ea
336357	336357-1	5-1/2"	6-3/4"	5-3/8"	6-1/8"	Black	Textured	#8 FH	.32	10 ea
336360	336360-1	6-1/2"	8-1/8"	6-1/2"	7-3/8"	White	Smooth	#8 FH	.41	10 ea
336362	336362-1	6-1/2"	8-1/8"	6-1/2"	7-3/8"	White	Textured	#8 FH	.42	10 ea
336365	336365-1	6-1/2"	8-1/8"	6-1/2"	7-3/8"	Black	Smooth	#8 FH	.41	10 ea
336367	336367-1	6-1/2"	8-1/8"	6-1/2"	7-3/8"	Black	Textured	#8 FH	.42	10 ea
336380	336380-1	8-5/16"	9-7/8"	8-1/4"	8-15/16"	White	Smooth	#8 FH	.55	10 ea
336382	336382-1	8-5/16"	9-7/8"	8-1/4"	8-15/16"	White	Textured	#8 FH	.56	10 ea
336385	336385-1	8-5/16"	9-7/8"	8-1/4"	8-15/16"	Black	Smooth	#8 FH	.55	10 ea
336387	336387-1	8-5/16"	9-7/8"	8-1/4"	8-15/16"	Black	Textured	#8 FH	.56	10 ea
337198	337198-1	Deck plate lanyard - 12"							.01	10 ea / 5 ea
337199	n/a	Lid Retaining strap - 8"							.01	10 ea

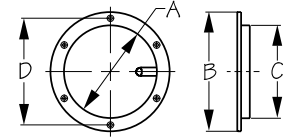
These Quarter-Turn Deck Plates feature a new locking system that prevents over tightening, jamming, or cross threading. An internal, molded-in collar on the bottom holds deck plate bags or other round containers. When installing, use silicone sealant on hull or deck surface. Keep threads clean with hot, soapy water. Lubricate with Vaseline or Teflon grease. Avoid contact with acetone or strong solvents. Constructed of UV resistant injection molded ABS. Installs with six #8 FH fasteners (not included). Available in black or white, smooth or textured.

▲WARNING: Cancer and Reproductive Harm - www.P65Warnings.ca.gov



POP-OUT DECK PLATE

Injection Molded ABS



Bulk	Display	A	B	C	D	Color	Lid Texture	Fastener	Wt.(lb.)	Std. Pack
336262	336262-1	6-1/2"	8-1/8"	6-1/2"	7-3/8"	White	Textured	#8 FH	.58	10 ea
336267	n/a	6-1/2"	8-1/8"	6-1/2"	7-3/8"	Black	Textured	#8 FH	.58	10 ea
336282	336282-1	8-1/2"	10"	8-3/8"	9"	White	Textured	#8 FH	.83	5 ea
336285	n/a	8-1/2"	10"	8-3/8"	9"	Black	Smooth	#8 FH	.83	5 ea
336287	n/a	8-1/2"	10"	8-3/8"	9"	Black	Textured	#8 FH	.83	5 ea

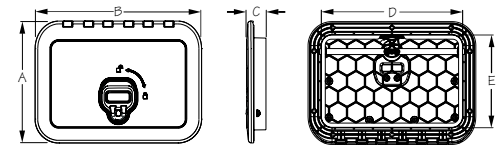
These Pop-Out Deck Plates feature an integrated, pop-up lever to make opening and closing a snap; no tools required. Rubber O-ring provides a watertight seal. Avoid contact with acetone or strong solvents. Constructed of UV resistant injection molded ABS for its structural strength, as well as weather and corrosion resistance. Installs with six #8 FH fasteners (not included). Available in black or white, smooth or textured. Patent Pending. Custom colors available.

⚠️WARNING: Cancer and Reproductive Harm - www.P65Warnings.ca.gov



TRIPLE LATCH RECTANGULAR MARINE HATCH

Injection Molded Polypropylene



Bulk	Display	A	B	C	D	E	Color	Fastener	Wt.(lb.)	Std. Pack
336520	336520-3	10-1/4"	14"	1-11/16"	11-13/16"	7-3/4"	White	#10 FH	1.92	1 ea
336525	336525-3	10-1/4"	14"	1-11/16"	11-13/16"	7-3/4"	Black	#10 FH	1.92	1 ea

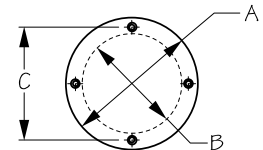
This Triple Latch Marine Deck Hatch features 3 locking points which when engaged cause the camming surface to pull the lid into the gasket creating a water tight seal. Constructed of injection molded polypropylene with a structural honeycomb lid for superior rigidity and strength. Non-slip textured surface. Can be mounted horizontally or vertically. Full length piano hinge for added strength and security. Interior opening is 11-1/8" X 7" and will accept group 24 series size batteries. Installs with ten #10 FH fasteners (not included). Available in black or white.

⚠️WARNING: Cancer and Reproductive Harm - www.P65Warnings.ca.gov



INSPECTION COVER

Injection Molded ABS



Bulk	Display	Color	A	B	C	Fastener	Wt.(lb.)	Std. Pack
337050	337050-1	Black	5-5/8"	4-1/4"	4-13/16"	#10 FH	.11	10 ea
337051	337051-1	White	5-5/8"	4-1/4"	4-13/16"	#10 FH	.11	10 ea
337052	n/a	Gray	5-5/8"	4-1/4"	4-13/16"	#10 FH	.11	10 ea

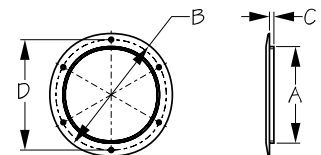
These screw mounted Inspection Covers offer an economical alternative to a screw out deck plate and are ideal for use in situations where access will be infrequent. These covers are a more secure option, requiring a screwdriver for removal. Use silicone sealant when installing for easier removal later. Avoid contact with acetone or strong solvents. Constructed of UV resistant injection molded ABS. Installs with four #10 FH fasteners (not included).

⚠️WARNING: Cancer and Reproductive Harm - www.P65Warnings.ca.gov



INSPECTION COVER

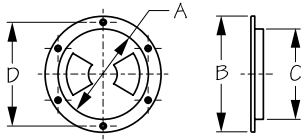
Injection Molded ABS



Bulk	Display	Color	A (Cutout)	B (Overall)	C	D	Fastener	Wt.(lb.)	Std. Pack
337060	n/a	Black	6-3/8"	8-1/8"	1/4"	7-5/16"	#8 FH	.46	10 ea
337061	n/a	White	6-3/8"	8-1/8"	1/4"	7-5/16"	#8 FH	.46	10 ea

These Inspection Covers offer an economical alternative to a screw out deck plate and are ideal for use in situations where access will be infrequent. These covers are a more secure option, requiring a screwdriver for removal. Use silicone sealant when installing for easier removal later. Avoid contact with acetone or strong solvents. Hole pattern matches our existing 6" Screw-Out Deck Plates. Constructed of UV resistant injection molded ABS. Installs with six #8 FH fasteners (not included).

⚠️WARNING: Cancer and Reproductive Harm - www.P65Warnings.ca.gov



SCREW-OUT DECK PLATE

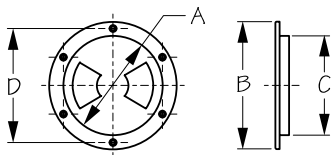
Injection Molded ABS



Bulk	Display	A	B	C	D	Color	Fastener	Wt.(lb.)	Std. Pack	
337140	337140-1	4-7/16"	5-3/4"	4-1/2"	5-1/8"	White	#8 FH	.19	10 ea	
337145	337145-1	4-7/16"	5-3/4"	4-1/2"	5-1/8"	Black	#8 FH	.19	10 ea	
337150	337150-1	5-7/16"	6-3/4"	5-1/2"	6-1/8"	White	#8 FH	.25	10 ea	
337155	337155-1	5-7/16"	6-3/4"	5-1/2"	6-1/8"	Black	#8 FH	.25	10 ea	
337160	337160-1	6-1/2"	8-1/8"	6-1/2"	7-3/8"	White	#8 FH	.44	10 ea	
337165	337165-1	6-1/2"	8-1/8"	6-1/2"	7-3/8"	Black	#8 FH	.44	10 ea	
337198	337198-1	Deck plate lanyard - 12"							.01	10 ea / 5 ea
337199	n/a	Lid retaining strap - 8"							.01	10 ea

These Screw-Out Deck Plates are molded to the highest standards. Keep threads clean with hot soapy water. Lubricate with Vaseline or Teflon grease. Avoid contact with acetone or strong solvents. Constructed of UV resistant and antioxidant injection molded ABS. Installs with six #8 FH fasteners (not included). When installing, use silicone sealant on hull or deck surface. Available in black or white.

▲WARNING: Cancer and Reproductive Harm - www.P65Warnings.ca.gov



SCREW-OUT DECK PLATE WITH CLEAR COVER

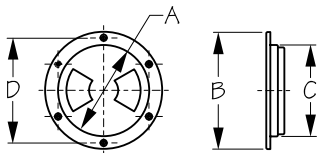
Injection Molded ABS/Polycarbonate



Bulk	Display	A	B	C	D	Color	Fastener	Wt.(lb.)	Std. Pack	
337146	337146-1	4-7/16"	5-3/4"	4-1/2"	5-1/8"	Black	#8 FH	.22	10 ea	
337161	337161-1	6-1/2"	8-1/8"	6-1/2"	7-3/8"	White	#8 FH	.44	10 ea	
337198	337198-1	Deck plate lanyard - 12"							.01	10 ea / 5 ea
337199	n/a	Lid retaining strap - 8"							.01	10 ea

These Screw-Out Deck Plates feature a clear polycarbonate lid, allowing visual inspection of the watertight compartment without removing the lid. Lubricate with Vaseline or Teflon grease. Keep threads clean with hot, soapy water. Avoid contact with acetone or strong solvent. Constructed of UV resistant injection molded ABS and polycarbonate. Installs with six #8 FH fasteners (not included). When installing, use silicone sealant on hull or deck surface. Available in black or white.

▲WARNING: Cancer and Reproductive Harm - www.P65Warnings.ca.gov



SCREW-OUT DECK PLATE WITH INTERNAL COLLAR

Injection Molded ABS



Bulk	Display	A	B	C	D	Color	Fastener	Wt.(lb.)	Std. Pack	
337142	n/a	4-7/16"	5-3/4"	4-1/2"	5-1/8"	White	#8 FH	.18	10 ea	
337152	n/a	5-7/16"	6-3/4"	5-1/2"	6-1/8"	White	#8 FH	.31	10 ea	
337162	n/a	6-1/2"	8-1/8"	6-1/2"	7-3/8"	White	#8 FH	.46	10 ea	
337199	n/a	Lid retaining strap - 8"							.01	10 ea
337198	337198-1	Deck plate lanyard - 12"							.01	10 ea / 5 ea

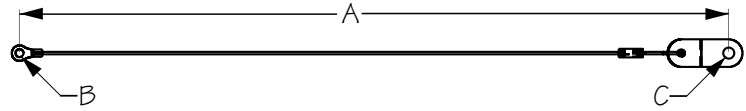
These Screw-Out Deck Plates are molded to the highest standards. An internal, molded-in collar on the bottom holds deck plate bags or other round containers. Lubricate with Vaseline or Teflon grease. Keep threads clean with hot, soapy water. Avoid contact with acetone or strong solvents. Constructed of UV resistant injection molded ABS. Installs with six #8 FH fasteners (not included). When installing, use silicone sealant on hull or deck surface. Available in black or white.

▲WARNING: Cancer and Reproductive Harm - www.P65Warnings.ca.gov



DECK PLATE LANYARD

304 Stainless Steel



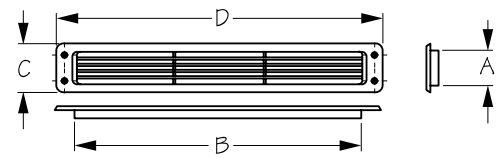
Bulk	Display	A	B	C	Wt.(lb.)	Std. Pack
337198	337198-1	12"	#6 RH	#10 RH	.01	10 ea / 5 ea

This Deck Plate Lanyard is designed to retain deck plate lids. Fits all Sea-Dog® Deck Plates. Constructed of corrosion resistant 304 stainless steel. Attaches to lid with #6 RH fastener (included) and to the interior hull with a #10 RH fastener (not included).



LOUVERED VENTILATORS

Injection Molded ABS



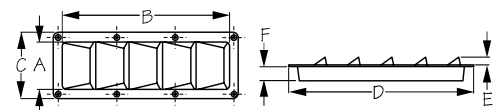
Bulk	Display	Color	A (Cutout Size)	B	C	D	Vent Area	Fastener	Wt.(lb.)	Std. Pack
337210	337210-1	White	1-7/8"	15-1/2"	2-5/8"	17-1/2"	18.56 in ²	#8 FH	.26	10 ea
337211	337211-1	Black	1-7/8"	15-1/2"	2-5/8"	17-1/2"	18.56 in ²	#8 FH	.26	10 ea

These Louvered Ventilators are designed to be used in conjunction with a collector box to facilitate air intake and exhaust. Avoid contact with acetone or strong solvents. Constructed of impact resistant injection molded ABS. Installs with four #8 FH fasteners (not included). Available in black or white. Interchangeable with Attwood® vent #1494.

⚠WARNING: Cancer and Reproductive Harm - www.P65Warnings.ca.gov

LOUVERED VENT

Injection Molded ABS



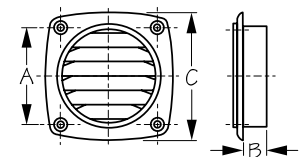
Bulk	Display	Color	A (Cutout Size)	B	C (Overall Size)	D	E	F	Wt.(lb.)	Std. Pack
337290	n/a	White	3-5/8"	12-1/8"	4-3/4"	13-1/4"	9/16"	1-1/16"	.35	1 ea
337291	n/a	Black	3-5/8"	12-1/8"	4-3/4"	13-1/4"	9/16"	1-1/16"	.35	1 ea

These Louvered Vents are designed to be used in conjunction with a collector box to facilitate air intake and exhaust. Avoid contact with acetone or strong solvents. Constructed of impact resistant injection molded ABS. Installs with eight #8 FH fasteners (not included). Available in black or white.

⚠WARNING: Cancer and Reproductive Harm - www.P65Warnings.ca.gov

THRU VENT

Injection Molded Polypropylene

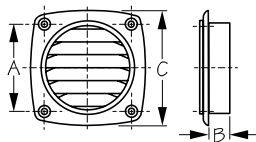


Bulk	Display	Color	A	B	C (Overall)	Hose/Hole Size	Vent Area	Fastener	Wt.(lb.)	Std. Pack
337310	n/a	White	2-13/16"	5/8"	3-11/16"	3"	3.04 in ²	#8 FH	.07	10 ea
337320	n/a	Black	2-13/16"	5/8"	3-11/16"	3"	3.04 in ²	#8 FH	.07	10 ea

These Thru Vents are designed for cabin or bilge ventilation. For use with 3" exhaust hose. Constructed of UV resistant injection molded polypropylene. Installs with four #8 FH fasteners (not included). Available in black or white. Vent area 3.04 in².

- Available in custom colors for large volume orders

⚠WARNING: Cancer and Reproductive Harm - www.P65Warnings.ca.gov



THRU VENT-ABS

Injected Molded ABS

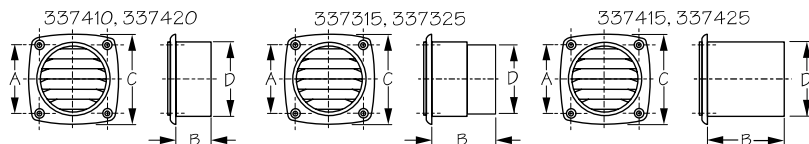


Bulk	Display	Color	A	B	C (Overall)	Hose/Hole Size	Vent Area	Fastener	Wt.(lb.)	Std. Pack
337311	n/a	White	2-13/16"	5/8"	3-11/16"	3"	3.04 in ²	#8 FH	.07	10 ea
337321	n/a	Black	2-13/16"	5/8"	3-11/16"	3"	3.04 in ²	#8 FH	.07	10 ea

These Thru Vents are designed for cabin or bilge ventilation. For use with 3" exhaust hose. Avoid contact with acetone or strong solvents. Constructed of UV and impact resistant injection molded ABS. Installs with four #8 FH fasteners (not included). Available in black or white. Vent area 3.04 in².

- Available in custom colors for large volume orders

▲WARNING: Cancer and Reproductive Harm - www.P65Warnings.ca.gov



HOSE THRU VENT

Injection Molded ABS

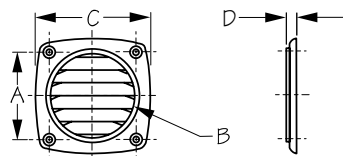


Bulk	Display	Color	A	B	C (Overall)	D (Hose/Hole Size)	Vent Area	Fastener	Wt.(lb.)	Std. Pack
337325	n/a	Black	2-13/16"	2-7/16"	3-11/16"	3"/3-1/8"	3.04 in ²	#8 FH	.16	10 ea
337420	n/a	Black	3-9/16"	1-3/8"	4-15/16"	4"	4.05 in ²	#8 FH	.19	10 ea
337425	n/a	Black	3-9/16"	3"	4-15/16"	4"	4.05 in ²	#8 FH	.27	10 ea
337315	n/a	White	2-13/16"	2-7/16"	3-11/16"	3"/3-1/8"	3.04 in ²	#8 FH	.16	10 ea
337410	n/a	White	3-9/16"	1-3/8"	4-15/16"	4"	4.05 in ²	#8 FH	.19	10 ea
337415	n/a	White	3-9/16"	3"	4-15/16"	4"	4.05 in ²	#8 FH	.27	10 ea

These Hose Thru Vents are designed for cabin or bilge ventilation. For use with 3" or 4" exhaust hose. Avoid contact with acetone or strong solvents. Constructed of UV resistant injection molded ABS. Installs with four #8 FH fasteners (not included). Available in black or white.

- Available in custom colors for large volume orders

▲WARNING: Cancer and Reproductive Harm - www.P65Warnings.ca.gov



FLUSH THRU VENT

Injection Molded ABS

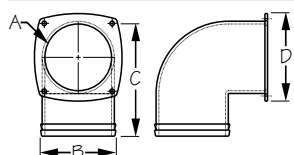


Bulk	Display	Color	A	B	C (Overall)	D	Hose/Hole Size	Vent Area	Wt.(lb.)	Std. Pack
337326	337326-1	Black	2-13/16"	2-3/4"	3-11/16"	5/16"	Up to 3"	3.04 in ²	.07	10 ea
337426	337426-1	Black	3-9/16"	3-3/4"	4-15/16"	5/16"	Up to 4"	4.05 in ²	.09	10 ea
337316	337316-1	White	2-13/16"	2-3/4"	3-11/16"	5/16"	Up to 3"	3.04 in ²	.07	10 ea
337416	337416-1	White	3-9/16"	3-3/4"	4-15/16"	5/16"	Up to 4"	4.05 in ²	.09	10 ea

These Flush Thru Vents are designed for cabin or bilge ventilation. For use with 3" or 4" exhaust hose. Avoid contact with acetone or strong solvents. Constructed of UV resistant injection molded ABS. Installs with four #8 FH fasteners (not included).

- Available in custom colors for large volume orders

▲WARNING: Cancer and Reproductive Harm - www.P65Warnings.ca.gov



HOSE VENT ELBOW

Injection Molded ABS



Bulk	Display	A	B (Hose Size)	C	D	Wt.(lb.)	Std. Pack
337350	n/a	2-3/4"	3"	2-13/16"	3-11/16"	.25	1 ea

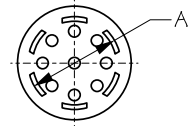
This Hose Vent Elbow is for use with 3" hose vents to create a 90° bend. Constructed of impact resistant injection molded ABS. Installs with four #8 FH fasteners (not included). Installation hole pattern matches Flush Thru Vents (337316, 337326, and 337590).

▲WARNING: Cancer and Reproductive Harm - www.P65Warnings.ca.gov



VENT PLUG

Injection Molded Nylon



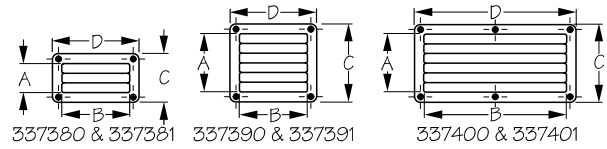
Bulk	Display	A	Vent Area	Per Pack	Color	Wt.(lb.)	Std. Pack
n/a	337360-1	1"	0.11 in ²	4	Natural	.02	5 sets

This Vent Plug is designed to press fit into a 1" diameter round hole. Ideal for venting areas that may be subjected to heat or moisture build-up. Constructed of UV resistant injection molded nylon. Vent area 0.11 in². Four per set.



LOUVERED VENT

Injection Molded ABS



Bulk	Display	A (Cutout Size)	B	C (Overall Size)	D	Color	Vent Area	Fastener	Wt.(lb.)	Std. Pack
337380	337380-1	1-7/8"	4-1/4"	3"	5-1/2"	Black	3.33 in ²	#8 FH	.10	10 ea
337390	337390-1	3-11/16"	4-1/4"	4-7/8"	5-1/2"	Black	6.65 in ²	#8 FH	.16	10 ea
337400	337400-1	3-11/16"	9"	4-7/8"	10-1/8"	Black	13.30 in ²	#8 FH	.30	10 ea
337381	337381-1	1-7/8"	4-1/4"	3"	5-1/2"	White	3.33 in ²	#8 FH	.10	10 ea
337391	337391-1	3-11/16"	4-1/4"	4-7/8"	5-1/2"	White	6.65 in ²	#8 FH	.16	10 ea
337401	337401-1	3-11/16"	9"	4-7/8"	10-1/8"	White	13.30 in ²	#8 FH	.30	10 ea

These Louvered Vents are designed to promote air circulation and prevent mold, mildew, and unpleasant odors. Ideal for cabin doors, lockers, dock boxes, etc. Avoid contact with acetone or strong solvents. Constructed of UV resistant injection molded ABS. Installs with #8 FH fasteners (not included). Available in black or white.

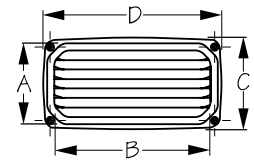
- Available in custom colors for large volume orders

⚠WARNING: Cancer and Reproductive Harm - www.P65Warnings.ca.gov



LOUVERED VENT

Injection Molded ABS



Bulk	Display	Color	A (Cutout Size)	B	C (Overall Size)	D	Vent Area	Fastener	Wt.(lb.)	Std. Pack
337500	n/a	Black	2-15/16"	6-7/8"	3-7/8"	7-7/8"	8.02 in ²	#8 FH	.17	10 ea
337501	n/a	White	2-15/16"	6-7/8"	3-7/8"	7-7/8"	8.02 in ²	#8 FH	.17	10 ea

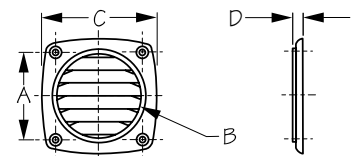
These Louvered Vents are designed to promote air circulation and prevent mold, mildew, and unpleasant odors. Ideal for cabin doors, lockers, dock boxes, etc. Avoid contact with acetone or strong solvents. Constructed of UV resistant injection molded ABS. Installs with four #8 FH fasteners (not included). Available in black or white.

⚠WARNING: Cancer and Reproductive Harm - www.P65Warnings.ca.gov



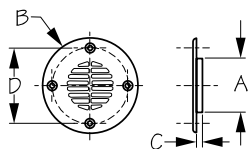
FLUSH THRU VENT

Investment Cast 316 Stainless Steel



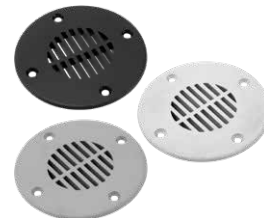
Bulk	Display	A	B	C (Overall)	D	Hose/Hole Size	Vent Area	Fastener	Wt.(lb.)	Std. Pack
337590	337590-1	2-7/8"	2-7/8"	3-7/8"	5/16"	Up to 3"	3.04 in ²	#8 FH	.46	1 ea

This Flush Thru Vent is designed for cabin or bilge ventilation. For use with 3" exhaust hose. Constructed of corrosion resistant investment cast 316 stainless steel. Installs with four #8 FH fasteners (not included).



DECK DRAIN

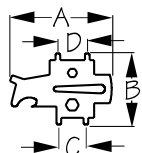
Injection Molded ABS



Bulk	Display	Color	A (Cutout)	B (Overall)	C	D	Vent Area	Fastener	Wt.(lb.)	Std. Pack
340020	340020-1	Black	2-1/2"	4-3/16"	1/4"	3-3/8"	1.70 in ²	#10 FH	.08	10 ea
340040	340040-1	Black	4"	5-5/8"	1/4"	4-13/16"	4.60 in ²	#10 FH	.15	10 ea
340021	340021-1	White	2-1/2"	4-3/16"	1/4"	3-3/8"	1.70 in ²	#10 FH	.08	10 ea
340041	340041-1	White	4"	5-5/8"	1/4"	4-13/16"	4.60 in ²	#10 FH	.15	10 ea
340022	n/a	Gray	2-1/2"	4-3/16"	1/4"	3-3/8"	1.70 in ²	#10 FH	.08	10 ea
340042	n/a	Gray	4"	5-5/8"	1/4"	4-13/16"	4.60 in ²	#10 FH	.15	10 ea

These Deck Drains are designed to drain water from cabin soles of bass, pontoon, and other open deck boats. Can be used to vent lockers, refrigerator cabinets, or as a grille for enclosed horns and speakers. Avoid contact with acetone or strong solvents. Constructed of UV resistant injection molded ABS. Installs with four #10 FH fasteners (not included).

⚠WARNING: Cancer and Reproductive Harm - www.P65Warnings.ca.gov



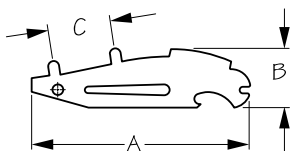
UNIVERSAL DECK FILL KEY

Stamped 304 Stainless Steel



Bulk	Display	A	B	C	D	Wt.(lb.)	Std. Pack
335690	335690-1	4"	2-3/4"	1-1/16"	1-3/16"	.13	10 ea

This Universal Deck Fill Key fits all Sea-Dog® Fuel Fills as well as most other competitors fills. A multi-purpose tool that also functions as a shackle key, bottle opener, straight blade screwdriver, plus 5/16" and 7/16" hex head wrenches. Constructed of corrosion resistant stamped 304 stainless steel.



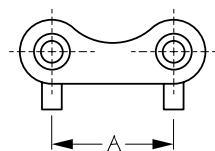
UNIVERSAL DECK FILL KEY - SMALL

Stamped 304 Stainless Steel



Bulk	Display	A	B	C	Wt.(lb.)	Std. Pack
335695	335695-1	4"	1-1/16"	1-1/8"	.06	10 ea

Universal Deck Fill Key fits most deck fills and includes a bottle opener and shackle key. Constructed of corrosion resistant stamped 304 stainless steel.



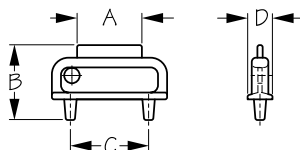
DECK FILL KEY

Investment Cast 316 Stainless Steel



Bulk	Display	A	Wt.(lb.)	Std. Pack
351399	351399-1	1-3/16"	.04	10 ea

Deck Fill Key is for use with all Fill Caps with 1-3/16" holes on center. Fits all cast stainless steel Sea-Dog® Deck Fill Caps (351320-351331 and 351350-351353). Constructed of corrosion resistant investment cast 316 stainless steel.



DECK FILL KEY

Injection Molded Nylon Glass Filled



Bulk	Display	A	B	C	D	Wt.(lb.)	Std. Pack
357399	357399-1	1"	1-1/8"	1-3/16"	3/8"	.01	10 ea

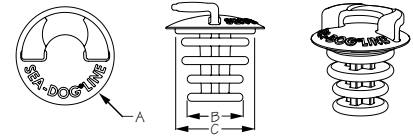
Deck Fill Key is for use with all Fill Caps featuring 1-3/16" holes on center. Constructed of UV resistant injection molded nylon.

⚠WARNING: Cancer and Reproductive Harm - www.P65Warnings.ca.gov



EMERGENCY DECK FILL PLUG

Nitrile-Buna Rubber



Bulk	Display	A	B	C	Wt.(lb.)	Std. Pack
357390	357390-1	2-3/8"	1-5/16"	1-7/8"	.05	10 ea
n/a	357390-5	POP Display-10 pcs.			.50	1 ea

This Emergency Deck Fill Plug is a must for any vessel. Fits most 1-1/2" hose deck fills in the event you lose your cap. For temporary use only until you can replace your OEM cap. Constructed of fuel resistant Nitrile-Buna rubber.

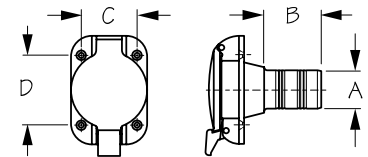


⚠WARNING: Cancer and Reproductive Harm - www.P65Warnings.ca.gov



FLIP TOP HOSE GAS FILL

Investment Cast 316 Stainless Steel



Bulk	Display	Marking	A	B	C	D	Fastener	Wt.(lb.)	Std. Pack
351100	n/a	Gas	2" Hose	2-1/2"	2-3/16"	2-3/4"	#10 FH	2.07	1 ea
351110	n/a	Gas	1-1/2" Hose	3"	2-3/16"	2-3/4"	#10 FH	2.04	1 ea
351119	n/a	Stainless Lever & Cap Rebuild Kit						.04	1 ea

Flip Top Hose Gas Fill features a convenient thumb latch to open the fill. Hinged lid guarantees cap will not fall overboard. Constructed of corrosion resistant investment cast 316 stainless steel. Installs with four #10 FH fasteners (not included). USCG regulations require bonding wire to prevent sparking.

Stainless Lever & Cap Rebuild Kit (351119, pictured below) contains: 1 Lever, 1 Lever Spring, 2 Pivot Pins, 1 Cotter Pin, 1 Cap Spring, and 1 Gasket/Washer.

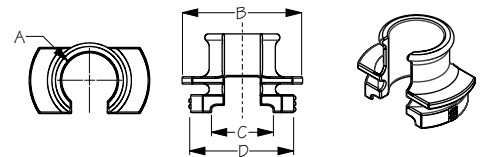


⚠WARNING: Cancer and Reproductive Harm - www.P65Warnings.ca.gov



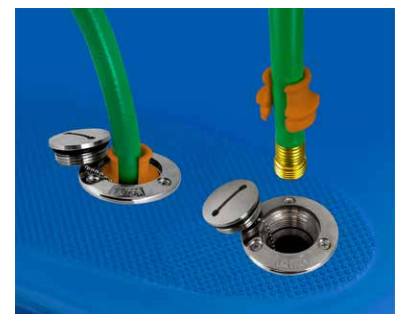
HOSE KLIP™ - WATER HOSE LOCK FOR DECK FILLS

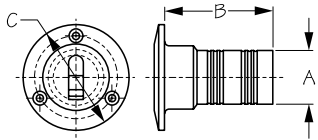
Injection Molded Nylon



Bulk	Display	A	B	C	D	Wt.(lb.)	Std. Pack
357393	357393-1	1"	1-3/4"	1-5/16"	1-9/16"	.02	10 ea
n/a	357393-5	POP Display-20 pcs.			.40	1 ea	

WINNER OF THE 2020 IBEX INNOVATION AWARD! Hose Klip™ Water Hose Lock stops your hose from coming out of the deck fill during filling. Compression fitting locks into place for hands free operation. Fits most 1-1/2" deck fills. Patented.





HOSE DECK FILL WITH KEYLESS CAP

Investment Cast 316 Stainless Steel/Injection Molded Nylon Glass Filled

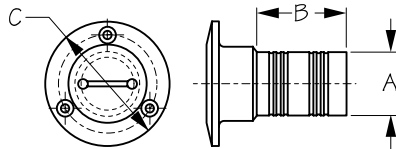


Bulk	Display	Cap Marking	Cap Color	A	B	C	Fastener	Wt.(lb.)	Std. Pack
351310	n/a	Gas	Red	1-1/2" Hose	3"	3"	#10 FH	.75	1 ea
351311	351311-1	Diesel	Green	1-1/2" Hose	3"	3"	#10 FH	.75	1 ea
351312	351312-1	Water	Blue	1-1/2" Hose	3"	3"	#10 FH	.75	1 ea
351313	351313-1	Waste	Black	1-1/2" Hose	3"	3"	#10 FH	.75	1 ea
n/a	357090-1	Gas	Red	Replacement Cap				.08	5 ea
n/a	357091-1	Diesel	Green	Replacement Cap				.08	5 ea
n/a	357093-1	Water	Blue	Replacement Cap				.08	5 ea
n/a	357094-1	Waste	Black	Replacement Cap				.08	5 ea
351300	351300-1	None (Body Only) for 1-1/2" Hose						.67	1 ea
OP35701	n/a	Replacement O-Ring for 1-1/2" Deck Fills						.01	10 ea
351349	n/a	Flange Gasket for 1-1/2" Deck Fills						.02	10 ea

These Hose Deck Fills with Keyless Caps have a built-in key for easy cap removal. The key can be locked in the upright position to open or close the fill and then recessed into the cap for a flush surface. Cap diameter 1-7/8", thread pitch 11-1/2 NPSM straight. Caps are color-coded for easy deck fill identification, eliminating dangerous and potentially costly problems caused by misidentification. All fills and replacement caps (except waste) include attachment chain. Constructed of corrosion resistant investment cast 316 stainless steel with molded fiberglass filled nylon cap. Installs with three #10 FH fasteners (not included). USCG regulations require bonding wire to prevent sparking. Gasket sold separately (351349).

- Black Caps With All Marking Available Through Special Order
- Special Order Requirements May Apply
- Custom Colors Available With Large Order

▲WARNING: Cancer and Reproductive Harm - www.P65Warnings.ca.gov



HOSE DECK FILL

Investment Cast 316 Stainless Steel



Bulk	Display	Body Marking	A	B	C	Fastener	Wt.(lb.)	Std. Pack
351320	351320-1	Gas	1-1/2" Hose	3"	3"	#10 FH	.86	1 ea
351321	351321-1	Diesel	1-1/2" Hose	3"	3"	#10 FH	.83	1 ea
351322	351322-1	Water	1-1/2" Hose	3"	3"	#10 FH	.85	1 ea
351323	351323-1	Waste	1-1/2" Hose	3"	3"	#10 FH	.85	1 ea
351300	351300-1	None (Body Only) for 1-1/2" Hose					.67	1 ea
351330	n/a	Gas	2" Hose	3-1/4"	3-7/16"	#10 FH	1.12	1 ea
351331	n/a	Diesel	2" Hose	3-1/4"	3-7/16"	#10 FH	1.12	1 ea
351400	n/a	None (Body Only)					.90	1 ea
n/a	351390-1	Replacement Cap			1-1/2" Hose		.22	5 ea
351391	351391-1	Replacement Cap			2" Hose		.24	5 ea
OP35701	n/a	Replacement O-Ring for 1-1/2" Deck Fills					.01	10 ea
351399	351399-1	Deck Fill Key - Stainless					.04	10 ea
357399	357399-1	Deck Fill Key - Nylon					.01	10 ea
351349	n/a	Flange Gasket for 1-1/2" Deck Fills					.02	10 ea

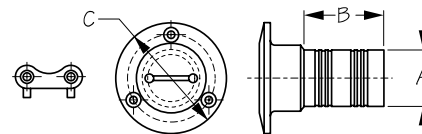
These Hose Deck Fills feature a slotted cap which requires a key to open and close for extra security. 1-1/2" hose deck fill cap diameter 1-7/8", thread pitch 11-1/2 NPSM straight. 2" hose deck fill cap diameter 2-1/8", thread pitch 11-1/2 NPSM straight. All fills and replacement caps (except waste) include attachment chain. Constructed of corrosion resistant investment cast 316 stainless steel. Installs with three #10 FH fasteners (not included). USCG regulations require bonding wire to prevent sparking. Gasket sold separately (351349).

▲WARNING: Cancer and Reproductive Harm - www.P65Warnings.ca.gov



HOSE DECK FILL WITH KEY

Investment Cast 316 Stainless Steel



Bulk	Display	Body Marking	A	B	C	Fastener	Wt.(lb.)	Std. Pack
351320K	n/a	Gas	1-1/2" Hose	3"	3"	#10 FH	.90	1 ea
351322K	n/a	Water	1-1/2" Hose	3"	3"	#10 FH	.90	1 ea
n/a	351390-1	Replacement Cap	1-1/2" Hose				.22	5 ea
351300	351300-1	None (Body Only) for 1-1/2" Hose					.67	1 ea
OP35701	n/a	Replacement O-Ring for 1-1/2" Deck Fills					.01	10 ea
351349	n/a	Flange Gasket for 1-1/2" Deck Fills					.02	10 ea

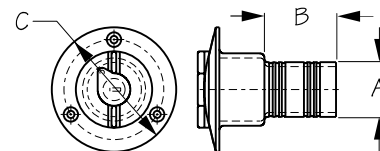
These Hose Deck Fills include a stainless Deck Fill Key (351399) necessary to open and close the slotted cap. Cap diameter 1-7/8", thread pitch 11-1/2 NPSM straight. Includes attachment chain. Constructed of corrosion resistant investment cast 316 stainless steel. Installs with three #10 FH fasteners (not included). USCG regulations require bonding wire to prevent sparking. Gasket sold separately (351349).

⚠WARNING: Cancer and Reproductive Harm - www.P65Warnings.ca.gov



LOCKING HOSE DECK FILL

Investment Cast 316 Stainless Steel



Bulk	Display	Body Marking	A	B	C	Fastener	Wt.(lb.)	Std. Pack
351320L	351320L-1	Gas	1-1/2" Hose	3-1/4"	3-7/16"	#10 FH	1.25	1 ea
351321L	351321L-1	Diesel	1-1/2" Hose	3-1/4"	3-7/16"	#10 FH	1.25	1 ea
351322L	n/a	Water	1-1/2" Hose	3-1/4"	3-7/16"	#10 FH	1.25	1 ea
351330L	n/a	Gas	2" Hose	3-1/4"	3-7/16"	#10 FH	1.35	1 ea
351331L	n/a	Diesel	2" Hose	3-1/4"	3-7/16"	#10 FH	1.35	1 ea
OP35105	n/a	Replacement Attachment Cable					.05	5 ea
n/a	351391-1	Replacement Non-Locking Cap					.24	5 ea

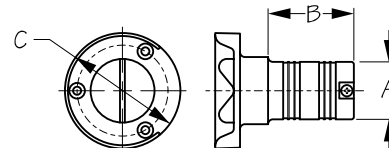
These Locking Hose Deck Fills feature a locking cap to prevent fuel theft. Cap spins freely when in the locked position. To unlock the cap, turn key until key hole is inline with the cap tabs (shown in photo). Cap diameter 2-1/8", thread pitch 11-1/2 NPSM straight. Color-coded with international symbols for easy deck fill identification. Includes two keys and cap attachment chain. Constructed of corrosion resistant investment cast 316 stainless steel for long term durability. Installs with three #10 FH fasteners (not included). USCG regulations require bonding wire to prevent sparking.

⚠WARNING: Cancer and Reproductive Harm - www.P65Warnings.ca.gov



HOSE DECK FILL WITH GUARD

Investment Cast 316 Stainless Steel



Bulk	Display	Body Marking	A	B	C	Fastener	Wt.(lb.)	Std. Pack
351340	351340-1	Gas	1-1/2" Hose	3"	3"	#10 FH	.84	1 ea
351393	351393-1	Replacement Cap					.21	5 ea
351349	n/a	Flange Gasket for 1-1/2" Deck Fills					.02	10 ea

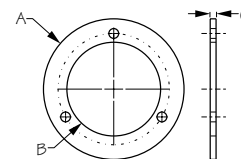
These Hose Deck Fills with Splash Guards feature a cap attachment chain and easy-to-use tabs for key-less operation (no deck plate key required). Cap diameter 1-11/16", thread pitch 12 SAE. Fits 1-1/2" ID hose. Constructed of corrosion resistant investment cast 316 stainless steel. Installs with three #10 FH fasteners (not included). USCG regulations require bonding wire to prevent sparking. Gasket sold separately (351349).

⚠WARNING: Cancer and Reproductive Harm - www.P65Warnings.ca.gov



DECK FILL GASKET FOR 1-1/2" FILLS

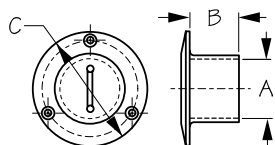
Neoprene Rubber



Bulk	Display	A	B	C	Fastener	Wt.(lb.)	Std. Pack
351349	n/a	3"	2"	1/8"	#10 FH	.02	10 ea

Fits most 1-1/2", three fastener hole deck fills. (Exceptions: locking version 351320L & plastic black body, 357000-1).

⚠WARNING: Cancer and Reproductive Harm - www.P65Warnings.ca.gov



PIPE DECK FILL

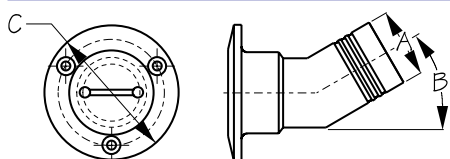
Investment Cast 316 Stainless Steel



Bulk	Display	Body Marking	A (Thread Pitch)	B	C	Fastener	Wt.(lb.)	Std. Pack	
351350	351350-1	Gas	1-1/2" - 11-1/2 NPSM	1-1/2"	3-7/16"	#10 FH	.75	1 ea	
351351	351351-1	Diesel	1-1/2" - 11-1/2 NPSM	1-1/2"	3-7/16"	#10 FH	.75	1 ea	
351352	351352-1	Water	1-1/2" - 11-1/2 NPSM	1-1/2"	3-7/16"	#10 FH	.75	1 ea	
351353	351353-1	Waste	1-1/2" - 11-1/2 NPSM	1-1/2"	3-7/16"	#10 FH	.75	1 ea	
n/a	351391-1	Replacement Cap (351350-351353)						.24	5 ea
351399	351399-1	Deck Fill Key - Stainless						.04	10 ea
357399	357399-1	Deck Fill Key - Nylon						.01	10 ea

These Pipe Deck Fills are designed to be used in conjunction with 1-1/2" - 11-1/2 NPSM straight threaded pipe. Cap diameter 2-1/8", thread pitch 11-1/2 NPSM straight. All fills and replacement caps (except waste) include attachment chain. Constructed of corrosion resistant investment cast 316 stainless steel. Installs with three #10 FH fasteners (not included). USCG regulations require bonding wire to prevent sparking.

▲WARNING: Cancer and Reproductive Harm - www.P65Warnings.ca.gov



ANGLED HOSE DECK FILL

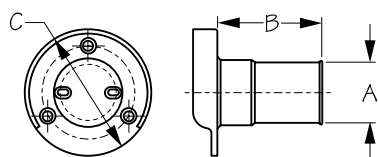
Investment Cast 316 Stainless Steel



Bulk	Display	Body Marking	A	B	C	Fastener	Wt.(lb.)	Std. Pack	
351520	n/a	Gas	1-1/2" Hose	30°	3"	#10 FH	.86	1 ea	
351521	n/a	Diesel	1-1/2" Hose	30°	3"	#10 FH	.83	1 ea	
351522	n/a	Water	1-1/2" Hose	30°	3"	#10 FH	.85	1 ea	
351523	n/a	Waste	1-1/2" Hose	30°	3"	#10 FH	.85	1 ea	
351500	n/a	None (Body Only)	1-1/2" Hose	30°	3"	#10 FH	.67	1 ea	
351620	n/a	Gas	2" Hose	30°	3-7/16"	#10 FH	1.12	1 ea	
351621	n/a	Diesel	2" Hose	30°	3-7/16"	#10 FH	1.12	1 ea	
OP35701	n/a	Replacement O-Ring for 1-1/2" Deck Fills						.01	10 ea
n/a	351390-1	Replacement Cap (351520-351523)						.22	5 ea
n/a	351391-1	Replacement Cap (351620-351621)						.24	5 ea
OP35105	n/a	Replacement Cap Attachment Cable						.05	5 ea
351399	351399-1	Deck Fill Key - Stainless						.04	10 ea
357399	357399-1	Deck Fill Key - Nylon						.01	10 ea
351349	n/a	Flange Gasket for 1-1/2" Deck Fills						.02	10 ea

These 30° Angled Hose Deck Fills feature a slotted cap which requires a key to open and close for extra security. 1-1/2" hose deck fill cap diameter 1-7/8", thread pitch 11-1/2 NPSM straight. 2" hose deck fill cap diameter 2-1/8", thread pitch 11-1/2 NPSM straight. All fills and replacement caps (except waste) include attachment cable (OP35105). Constructed of investment cast 316 stainless steel. Installs with three #10 FH fasteners (not included). USCG regulations require bonding wire to prevent sparking. Gasket sold separately (351349).

▲WARNING: Cancer and Reproductive Harm - www.P65Warnings.ca.gov



HOSE DECK FILL WITH SPLASH GUARD

Die Cast Zinc Chrome Plated



Bulk	Display	Marking	A	B	C	Fastener	Wt.(lb.)	Std. Pack	
351750	351750-1	Gas	1-1/2" Hose	2-9/16"	3-1/8"	#10 FH	.55	1 ea	
n/a	351755-1	Replacement Cap (351750, 351750-1)						.10	10 ea
351349	n/a	Flange Gasket for 1-1/2" Deck Fills						.02	10 ea

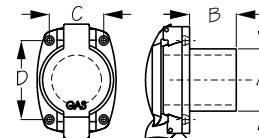
This Hose Deck Fill with Splash Guard features a cap with easy-to-use tabs for keyless operation (no deck plate key required). Cap diameter 1-11/16", thread pitch 12 SAE. Fits 1-1/2" ID hose. Includes attachment chain. Constructed of chrome plated die cast zinc. Installs with three #10 FH fasteners (not included). USCG regulations require bonding wire to prevent sparking. Includes Flange Gasket (351349).

▲WARNING: Cancer and Reproductive Harm - www.P65Warnings.ca.gov



FLIP TOP HOSE GAS FILL

Cast Aluminum



Bulk	Display	Marking	A	B	C	D	Fastener	Wt.(lb.)	Std. Pack
351800	n/a	Gas	2" Hose	1-1/2"	1-3/4"	2-1/2"	#10 FH	.57	1 ea

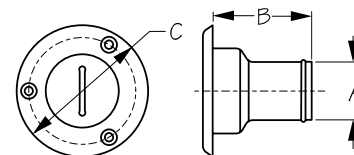
Flip Top Hose Gas Fill features a convenient thumb latch to open the fill. Hinged lid guarantees cap will not fall overboard. Constructed of cast aluminum, making it ideal for aluminum hull boats. Installs with four #10 FH fasteners (not included). USCG regulations require bonding wire to prevent sparking.

⚠WARNING: Cancer and Reproductive Harm - www.P65Warnings.ca.gov



HOSE DECK FILL WITH SLOTTED CAP

Injection Molded Nylon Glass Filled



Bulk	Display	Body Color	Cap Marking	Cap Color	A	B	C	Fastener	Wt.(lb.)	Std. Pack
357010	357010-1	Black	Gas	Red	1-1/2" Hose	2-1/2"	3-3/8"	#10 FH	.21	1 ea
357011	357011-1	Black	Diesel	Green	1-1/2" Hose	2-1/2"	3-3/8"	#10 FH	.21	1 ea
357013	357013-1	Black	Water	Blue	1-1/2" Hose	2-1/2"	3-3/8"	#10 FH	.21	1 ea
357014	357014-1	Black	Waste	Black	1-1/2" Hose	2-1/2"	3-3/8"	#10 FH	.21	1 ea
n/a	357000-1	Black	n/a	Body Only	1-1/2" Hose	2-1/2"	3-3/8"	#10 FH	.15	1 ea
n/a	357015-1	Red - Gas Replacement Cap							.06	1 ea
n/a	357016-1	Green - Diesel Replacement Cap							.06	1 ea
n/a	357017-1	Blue - Water Replacement Cap							.06	1 ea
n/a	357018-1	Black - Waste Replacement Cap							.06	1 ea
351399	351399-1	Deck Fill Key - Stainless							.04	10 ea
357399	357399-1	Deck Fill Key - Nylon							.01	10 ea
OP35701	n/a	Replacement O-Ring for 1-1/2" Deck Fills							.01	10 ea

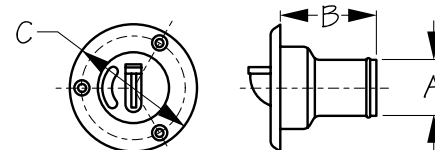
These Hose Deck Fills feature a slotted cap which requires a key to open and close. Cap diameter 1-7/8", thread pitch 11-1/2 NPSM straight. Caps are color-coded for easy identification, eliminating dangerous and potentially costly problems caused by misidentification. All fills and replacement caps (except waste) include attachment chain. Constructed of fiberglass filled injection molded nylon. These fills contain no metal and do not require grounding to the boat's electrical system. Installs with three #10 FH fasteners (not included). Black caps with all markings are available through special order. Special order requirements may apply. Custom colors available with large orders.

⚠WARNING: Cancer and Reproductive Harm - www.P65Warnings.ca.gov



HOSE DECK FILL WITH KEYLESS CAP

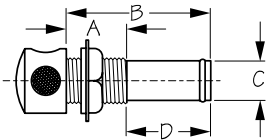
Injection Molded Nylon Glass Filled



Bulk	Display	Body Color	Cap Marking	Cap Color	A	B	C	Fastener	Wt.(lb.)	Std. Pack
357030	357030-1	Black	Gas	Red	1-1/2" Hose	2-1/2"	3-3/8"	#10 FH	.22	1 ea
357031	357031-1	Black	Diesel	Green	1-1/2" Hose	2-1/2"	3-3/8"	#10 FH	.22	1 ea
357032	357032-1	Black	Oil	Black	1-1/2" Hose	2-1/2"	3-3/8"	#10 FH	.22	1 ea
357033	357033-1	Black	Water	Blue	1-1/2" Hose	2-1/2"	3-3/8"	#10 FH	.22	1 ea
357034	357034-1	Black	Waste	Black	1-1/2" Hose	2-1/2"	3-3/8"	#10 FH	.22	1 ea
n/a	357092-1	Black - Oil Replacement Cap							.08	5 ea
n/a	357090-1	Red - Gas Replacement Cap							.08	5 ea
n/a	357091-1	Green - Diesel Replacement Cap							.08	5 ea
n/a	357093-1	Blue - Water Replacement Cap							.08	5 ea
n/a	357094-1	Black - Waste Replacement Cap							.08	5 ea
n/a	357000-1	Black (Body Only)							.15	1 ea
OP35701	n/a	Replacement O-Ring for 1-1/2" Deck Fills							.01	10 ea

These Hose Deck Fills feature a built-in key for easy cap removal. Lock the key in the upright position to open or close or recess the key into the cap for a flush surface. Cap diameter 1-7/8", thread pitch 11-1/2 NPSM straight. Caps are color-coded for easy identification, eliminating dangerous and potentially costly problems caused by misidentification. All fills and replacement caps (except waste) include attachment chain. Constructed of fiberglass filled injection molded nylon. These fills contain no metal and do not require grounding to the boat's electrical system. Installs with three #10 FH fasteners (not included). Will not work with pressurized oil injection systems. Connect deck fill to reservoir via hose (not included). Black caps with all markings are available through special order. Special order requirements may apply. Custom colors available with large orders.

⚠WARNING: Cancer and Reproductive Harm - www.P65Warnings.ca.gov



GAS TANK VENT

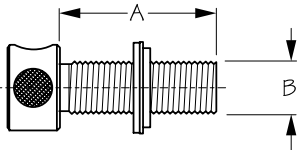
Machined Brass Chrome Plated



Bulk	Display	A	B	C	D	Wt.(lb.)	Std. Pack
352010	352010-1	15/16"	2-1/4"	5/8" Hose	1-5/16"	.21	10 ea

This Gas Tank Vent provides the needed air flow to maintain proper fuel flow while filling and during use. Vents compensate for changes in tank level due to consumption, as well as temperature related expansion and contraction. Designed to prevent vacuum build up during use, which can disrupt fuel delivery. They also double as a pressure release valve for the gas tank. Helps prevent fuel spills, blow-back, and ensures fumes vent outboard instead of inside the boat. Two screens provide a barrier to keep unwanted contaminants from entering the tank. An integral 5/8" hose barb securely connects vent hose. Constructed of chrome plated machined brass.

⚠WARNING: Cancer and Reproductive Harm - www.P65Warnings.ca.gov



GAS TANK VENT - ALL THREAD

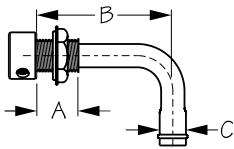
Machined Brass Chrome Plated



Bulk	Display	A	B	Wt.(lb.)	Std. Pack
352020	352020-1	1-13/16"	5/8"-18 NF	.21	10 ea

This All Thread Gas Tank Vent provides the needed air flow to maintain proper fuel flow while filling and during use. Vents compensate for changes in tank level due to consumption, as well as temperature related expansion and contraction. Designed to prevent vacuum build-up during use, which can disrupt fuel delivery they also double as a pressure release valve for the gas tank. Helps prevent fuel spills, blow-back, and ensures fumes vent outboard instead of inside the boat. Integral 5/8"-18 NF threads to securely connect vent hose. Constructed of chrome plated machined brass.

⚠WARNING: Cancer and Reproductive Harm - www.P65Warnings.ca.gov



GAS TANK VENT 90°

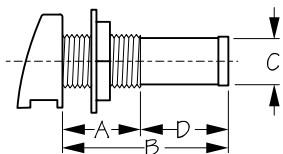
Machined Brass Chrome Plated



Bulk	Display	A	B	C	Wt.(lb.)	Std. Pack
352030	352030-1	7/8"	2-3/8"	5/8" Hose	.27	10 ea

This 90° Gas Tank Vent provides the needed air flow to maintain proper fuel flow while filling and during use. Vents compensate for changes in tank level due to consumption, as well as temperature related expansion and contraction. Designed to prevent vacuum build-up during use, which can disrupt fuel delivery they also double as a pressure release valve for the gas tank. Helps prevent fuel spills, blow-back, and ensures fumes vent outboard instead of inside the boat. An integral 5/8" hose barb securely connects vent hose at a 90° angle. Constructed of chrome plated machined brass.

⚠WARNING: Cancer and Reproductive Harm - www.P65Warnings.ca.gov



GAS TANK VENT

Die Cast Zinc Chrome Plated



Bulk	Display	A	B	C	D	Wt.(lb.)	Std. Pack
352100	352100-1	1"	2-1/8"	5/8" Hose	1-1/8"	.16	10 ea

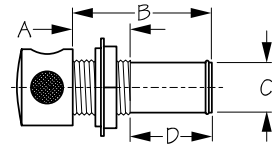
Gas Tank Vents provide the needed air flow to maintain proper fuel flow while filling and during use. Vents compensate for changes in tank level due to consumption, as well as temperature related expansion and contraction. Designed to prevent vacuum build-up during use, which can disrupt fuel delivery they also double as a pressure release valve for the gas tank. Helps prevent fuel spills, blow-back, and ensures fumes vent outboard instead of inside the boat. An integral 5/8" hose barb securely connects vent hose. Constructed of chrome plated die cast zinc. Recommended for fresh water use.

⚠WARNING: Cancer and Reproductive Harm - www.P65Warnings.ca.gov



GAS TANK VENT

Die Cast Zinc Chrome Plated



Bulk	Display	A	B	C	D	Wt.(lb.)	Std. Pack
352110	352110-1	3/4"	1-3/4"	5/8" Hose	1"	.16	10 ea

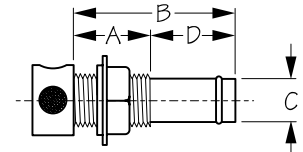
This Gas Tank Vent provides the needed air flow to maintain proper fuel flow while filling and during use. Vents compensate for changes in tank level due to consumption as well as temperature related expansion and contraction. Designed to prevent vacuum build up during use which can disrupt fuel delivery they also double as a pressure release valve for the gas tank. Helps prevent fuel spills, blow-back, and ensures fumes vent outboard instead of inside the boat. Two screens provide a barrier to keep unwanted contaminants from entering the tank. An integral 5/8" hose barb securely connects vent hose. Constructed of chrome plated die cast zinc. Recommended for fresh water use.

⚠WARNING: Cancer and Reproductive Harm - www.P65Warnings.ca.gov



GAS TANK VENT

Investment Cast 316 Stainless Steel



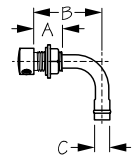
Bulk	Display	A	B	C	D	Wt.(lb.)	Std. Pack
352210	352210-1	1-3/16"	2-1/2"	5/8" Hose	1-5/16"	.21	10 ea

This Gas Tank Vent provides the needed air flow to maintain proper fuel flow while filling and during use. Vents compensate for changes in tank level due to consumption, as well as temperature related expansion and contraction. Designed to prevent vacuum build-up during use, which can disrupt fuel delivery they also double as a pressure release valve for the gas tank. Helps prevent fuel spills, blow-back, and ensures fumes vent outboard instead of inside the boat. Two screens provide a barrier to keep unwanted contaminants from entering the tank. An integral 5/8" hose barb securely connects vent hose. Constructed of corrosion resistant investment cast 316 stainless steel.



GAS TANK VENT 90°

Investment Cast 316 Stainless Steel



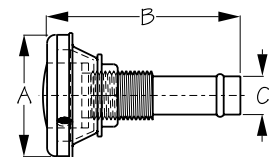
Bulk	Display	A	B	C	Wt.(lb.)	Std. Pack
352230	352230-1	1"	2-5/8"	5/8" Hose	.27	10 ea

This 90° Gas Tank Vent provides the needed air flow to maintain proper fuel flow while filling and during use. Vents compensate for changes in tank level due to consumption, as well as temperature related expansion and contraction. Designed to prevent vacuum build-up during use, which can disrupt fuel delivery they also double as a pressure release valve for the gas tank. Helps prevent fuel spills, blow-back, and ensures fumes vent outboard instead of inside the boat. Two screens provide a barrier to keep unwanted contaminants from entering the tank. An integral 5/8" hose barb securely connects vent hose at a 90° angle. Constructed of corrosion resistant investment cast 316 stainless steel.



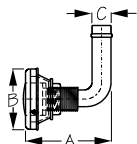
FLUSH MOUNT GAS TANK VENT

Investment Cast 316 Stainless Steel



Bulk	Display	A	B	C	Wt.(lb.)	Std. Pack
353210	353210-1	1-13/16"	3"	5/8" Hose	.30	10 ea

This Flush Mount Gas Tank Vent provides the needed air flow to maintain proper fuel flow while filling and during use. Vents compensate for changes in tank level due to consumption, as well as temperature related expansion and contraction. Designed to prevent vacuum build-up during use, which can disrupt fuel delivery they also double as a pressure release valve for the gas tank. Helps prevent fuel spills, blow-back, and ensures fumes vent outboard instead of inside the boat. An integral 5/8" hose barb securely connects vent hose. Constructed of corrosion resistant investment cast 316 stainless steel.



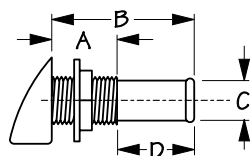
FLUSH MOUNT GAS TANK VENT 90°

Investment Cast 316 Stainless Steel



Bulk	Display	A	B	C	Wt.(lb.)	Std. Pack
353230	353230-1	2-9/16"	1-13/16"	5/8" Hose	.30	10 ea

This Flush Mount 90° Gas Tank Vent provides the needed air flow to maintain proper fuel flow while filling and during use. Vents compensate for changes in tank level due to consumption, as well as temperature related expansion and contraction. Designed to prevent vacuum build-up during use, which can disrupt fuel delivery they also double as a pressure release valve for the gas tank. Helps prevent fuel spills, blow-back, and ensures fumes vent outboard instead of inside the boat. An integral 5/8" hose barb securely connects vent hose at a 90° angle. Constructed of corrosion resistant investment cast 316 stainless steel.



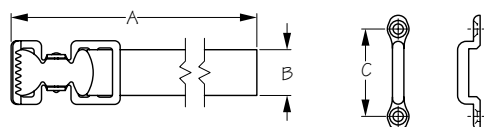
GAS TANK VENT

Injection Molded Nylon



Bulk	Display	A	B	C	D	Color	Wt.(lb.)	Std. Pack
357100	357100-1	1"	2-1/8"	5/8" Hose	1-1/8"	Black	.05	10 ea
357105	357105-1	1"	2-1/8"	5/8" Hose	1-1/8"	White	.05	10 ea

These Gas Tank Vents provide the needed air flow to maintain proper fuel flow while filling and during use. Vents compensate for changes in tank level due to consumption, as well as temperature related expansion and contraction. Designed to prevent vacuum build-up during use, which can disrupt fuel delivery they also double as a pressure release valve for the gas tank. Helps prevent fuel spills, blow-back, and ensures fumes vent outboard instead of inside the boat. An integral 5/8" hose barb securely connects vent hose. Constructed of UV resistant injection molded nylon.



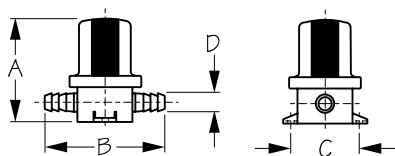
GAS TANK STRAP

Nylon Webbing/304 Stainless Steel



Bulk	Display	A	B	C	Fastener	Wt.(lb.)	Std. Pack
n/a	359995-1	6'	1"	2-3/16"	#10 FH	.23	10 ea

This Gas Tank Strap is for use in securing a portable gas tank. Includes: 1" x 6' webbing strap with buckle, two footman's loops, and four #10 FH fasteners. Constructed of nylon webbing with corrosion resistant 304 stainless steel hardware.



INLINE WATER STRAINER

Injection Molded Polypropylene/Polycarbonate/Stainless Steel



Bulk	Display	Screen Size	A	B	C	D	Fasteners	Wt.(lb.)	Std. Pack
364135	n/a	50 Mesh	3-9/16"	4-1/16"	2-9/16"	1/2" Hose	#10 RH	.19	1 ea
364136	n/a	50 Mesh	3-9/16"	4-1/16"	2-9/16"	5/8" Hose	#10 RH	.19	1 ea
364137	n/a	1/16" Mesh	3-9/16"	4-1/16"	2-9/16"	3/4" Hose	#10 RH	.21	1 ea
364190	n/a	Polycarbonate cover for strainer						.06	1 ea
n/a	364195-1	Replacement 50 Mesh screen						.02	10 ea
n/a	364196-1	Replacement 1/16" Mesh screen						.04	10 ea
364199	n/a	Buna 70 O-Ring replacement strainer gasket						.01	10 ea

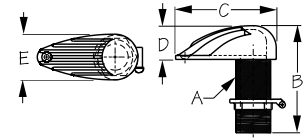
These Inline Water Strainers contain a removable, clear lens for easy cleaning and changing of filter. Filter should be mounted above water level line and on suction side of pump. Constructed of injection molded polypropylene, polycarbonate, and stainless steel. Filter is interchangeable with Jabsco®.

⚠WARNING: Cancer and Reproductive Harm - www.P65Warnings.ca.gov



HIGH SPEED PIPE INTAKE STRAINER

Investment Cast 316 Stainless Steel



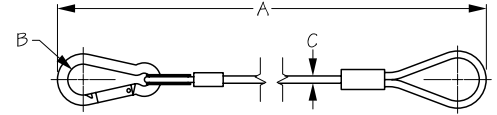
Bulk	Display	A	B	C	D	E	Wt.(lb.)	Std. Pack
369575	n/a	1"	4-1/8"	3-7/8"	1-1/4"	1-5/8"	1.11	1 ea

High Speed Pipe Intake Strainer features 1" - 11-1/2 NPSM straight threads. Includes grounding stud. Constructed of corrosion resistant investment cast 316 stainless steel.



OUTBOARD MOTOR CABLE

Vinyl Coated Galvanized Steel Wire



Bulk	Display	A	B	C	Wt.(lb.)	Std. Pack
n/a	371599-1	4'-2"	11/16"	3/16"	.19	5 ea

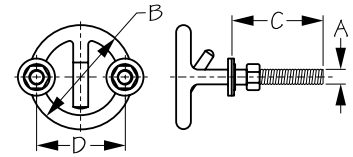
Outboard Motor Cable is used to secure the motor to the bracket during transport. 4'-2" total length. Includes Sea-Dog® Snap Hook (156060). Constructed of vinyl coated galvanized steel wire.

⚠WARNING: Cancer and Reproductive Harm - www.P65Warnings.ca.gov



TRANSOM MOUNT SKI TOW - STUD STYLE

Formed 316 Stainless Steel



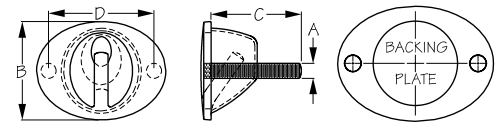
Bulk	Display	A	B	C	D	Wt.(lb.)	Std. Pack
371631	371631-1	3/8"-16 NC	2-1/2"	2-1/4"	2-3/16"	.58	5 ea
371633	371633-1	3/8"-16 NC	3"	2-1/4"	2-5/8"	.65	5 ea
371644	371644-1	1/2"-13 NC	3-1/2"	3"	3"	1.28	5 ea

These Stud Style Transom Mount Ski Tows are designed to bolt through the transom for maximum strength. Constructed of corrosion resistant AISI formed 316 stainless steel rod for durability.



FLUSH MOUNT SKI TOW

Investment Cast 316 Stainless Steel



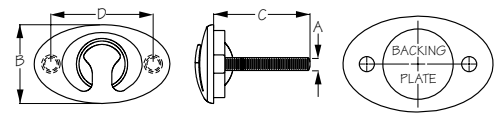
Bulk	Display	A	B	C	D	Wt.(lb.)	Std. Pack
371833	n/a	3/8"-16 NC	2-7/8"	2-1/4"	3-1/16"	.50	5 ea

This Flush Mount Ski Tow has been redesigned to give your transom an updated look. Stud centers allow direct replacement of our most popular standard Ski Tow (371644) with just the addition of a 2-1/8" hole. Includes backing plate. Constructed of corrosion resistant investment cast 316 stainless for durability.



FLUSH MOUNT SKI TOW

Investment Cast 316 Stainless Steel



Bulk	Display	A	B	C	D	Wt.(lb.)	Std. Pack
371840	n/a	3/8"-16 NC	2-3/16"	2-13/16"	3"	1.05	1 ea

This Flush Mount Ski Tow gives your transom an updated look. Stud centers allow direct replacement of most popular standard ski tows. Includes backing plate. Constructed of corrosion resistant investment cast 316 stainless for durability.