



# 5

- 
- |                          |                   |
|--------------------------|-------------------|
| Top Fittings             | Elbow Tees        |
| Handrail Fittings        | Rail Tees         |
| Slide Fittings           | Handrails         |
| Hinge Fittings           | Straps & Lanyards |
| Track Fittings           | Canvas Fasteners  |
| Connectors               |                   |
| Stanchion & End Fittings |                   |

## Rail Fittings

## BIMINI FITTINGS

Die Cast Zinc Chrome Plated



Bulk	Display	Description	Tube O.D.*	Pin Size	Pin/Screw Part #	Fastener	Wt.(lb.)	Std. Pack
276100	276100-1	Top Cap	7/8"	1/4"	n/a	n/a	.12 / .24	10 ea / 10 pr
276160	276160-1	Jaw Slide	7/8"	1/4"	0P27001	n/a	.14 / .28	10 ea / 10 pr
276200	276200-1	90° Deck Hinge	Base: 3/4" x 2-1/4"	1/4"	0P27601	#10 FH	.10 / .20	10 ea / 10 pr

These Bimini Fittings are for use in Bimini top applications. Top fittings can be attached to railing with set screws or pop riveted using stainless or aluminum rivets. Set screws included with display packed fittings only. Set screws can be purchased separately (299999-1) for bulk fittings. Requires 1/8" Allen wrench to install. Pin size 1/4". Deck hinges install with #10 FH fasteners (not included). Constructed of chrome plated die cast zinc. Recommended for freshwater use. \*Stainless tubing with a wall thickness of 0.049".

**⚠WARNING: Cancer and Reproductive Harm - www.P65Warnings.ca.gov**

## RAIL BASE FITTINGS

Die Cast Zinc Chrome Plated



Bulk	Display	Description	Tube O.D.*	Base	Fastener	Wt.(lb.)	Std. Pack
n/a	286030-1	30° Round Base	7/8"	2-5/8"	#10 FH	.38	10 ea
286060	286060-1	60° Round Base	7/8"	2-5/8"	#10 FH	.32	10 ea
286090	286090-1	90° Round Base	7/8"	2-5/8"	#10 FH	.36	10 ea
n/a	286145-1	45° Rectangular Base	7/8"	1-5/8" x 2-3/4"	#10 FH	.26	10 ea
n/a	286160-1	60° Rectangular Base	7/8"	1-5/8" x 2-3/4"	#10 FH	.28	10 ea
286190	286190-1	90° Rectangular Base	7/8"	1-5/8" x 2-3/4"	#10 FH	.31	10 ea

These Rail Base Fittings can be attached to railing with set screws or pop riveted using stainless or aluminum rivets. Set screws included with display packed fittings only. Set screws can be purchased separately (299999-1) for bulk fittings. Requires 1/8" Allen wrench to install. Installs with #10 FH fasteners (not included). Constructed of chrome plated die cast zinc. Recommended for freshwater use. \*Stainless tubing with a wall thickness of 0.049".

**⚠WARNING: Cancer and Reproductive Harm - www.P65Warnings.ca.gov**

**HANDRAIL FITTINGS**

Die Cast Zinc Chrome Plated



Bulk	Display	Description	Rail Height	Tube O.D.*	Fastener	Wt.(lb.)	Std. Pack
286560	286560-1	60° Center	2-1/8"	7/8"	#10 FH	.24	10 ea
286565	286565-1	60° End - Left (Port) Inside Set Screw	2-1/8"	7/8"	#10 FH	.26	10 ea
286566	286566-1	60° End - Right (Starboard) Inside Set Screw	2-1/8"	7/8"	#10 FH	.26	10 ea
n/a	286955-1	5-1/2° Blend Base	n/a	7/8"	#10 FH	.35	10 ea

These Handrail Fittings can be attached to railing with set screws or pop riveted using stainless or aluminum rivets. Set screws included with display packed fittings only. Set screws can be purchased separately (299999-1) for bulk fittings. Requires 1/8" Allen wrench. Installs with #10 FH fasteners (not included). Constructed of chrome plated die cast zinc. Recommended for freshwater use. \*Stainless tubing with a wall thickness of 0.049".

**▲WARNING: Cancer and Reproductive Harm - www.P65Warnings.ca.gov**

**RAIL TEES, ELBOWS, & BOW FORMS**

Die Cast Zinc Chrome Plated



Bulk	Display	Description	Tube O.D.*	Wt.(lb.)	Std. Pack
296090	296090-1	90° Tee	7/8"	.28	10 ea
n/a	296095-1	90° Elbow	7/8"	.29	10 ea
296510	296510-1	110° Bow Form	7/8"	.59	5 ea

These Rail Tees, Elbows, & Bow Forms can be attached to railing with set screws or pop riveted using stainless or aluminum rivets. Set screws included with display packed fittings only. Set screws can be purchased separately (299999-1) for bulk fittings. Requires 1/8" Allen wrench to install. Flagpole mounting hole in 110° Bow Form is designed to fit 1/2" diameter flagpoles. Constructed of chrome plated die cast zinc. Recommended for freshwater use. \*Stainless tubing with a wall thickness of 0.049".

**▲WARNING: Cancer and Reproductive Harm - www.P65Warnings.ca.gov**

## TOP FITTINGS

Injection Molded Nylon



Bulk	Display	Description	Color	Tube O.D.*	Pin Size	Wt.(lb.)	Std. Pack
273100	273100-1	Top Cap	Black	7/8"	1/4"	.04 / .08	10 ea / 10 pr
273101	273101-1	Top Cap	White	7/8"	1/4"	.04 / .08	10 ea / 10 pr
273110	273110-1	Top Cap	Black	3/4"	1/4"	.02 / .04	10 ea / 10 pr
273111	273111-1	Top Cap	White	3/4"	1/4"	.02 / .04	10 ea / 10 pr
273175	273175-1	Top Insert	Black	3/4"	1/4"	.02 / .04	10 ea / 10 pr
273176	273176-1	Top Insert	White	3/4"	1/4"	.02 / .04	10 ea / 10 pr
273180	273180-1	Top Insert	Black	7/8"	1/4"	.03 / .06	10 ea / 10 pr
273181	273181-1	Top Insert	White	7/8"	1/4"	.03 / .06	10 ea / 10 pr
273580	273580-1	Square tube Top Insert	Black	1" (7/8" x 7/8" Inside)	1/4"	.03 / .06	10 ea / 10 pr
273581	273581-1	Square tube Top Insert	White	1" (7/8" x 7/8" Inside)	1/4"	.03 / .06	10 ea / 10 pr

Top Fittings create an attachment point and function as a pivot point as part of a Bimini top system. These fittings connect to tubing either as a Top Cap or Top Insert for 3/4" or 7/8" round tubing or 1" square tubing. Pin size 1/4". Constructed of UV resistant injection molded nylon. Available in black or white. \*Stainless tube wall thickness 0.049".

**⚠WARNING: Cancer and Reproductive Harm - [www.P65Warnings.ca.gov](http://www.P65Warnings.ca.gov)**

## SLIDE FITTINGS

Injection Molded Nylon



Bulk	Display	Description	Color	Tube O.D.*	Pin Size	Screw Part #	Wt.(lb.)	Std. Pack
273160	273160-1	Jaw Slide	Black	7/8"	3/16"	0P27301	.07 / .14	10 ea / 10 pr
273161	273161-1	Jaw Slide	White	7/8"	3/16"	0P27301	.07 / .14	10 ea / 10 pr
273162	273162-1	Hinged Jaw Slide w/Bolt	Black	7/8"	1/4"	0P27001	.07	10 ea
273163	273163-1	Hinged Jaw Slide w/Bolt	White	7/8"	1/4"	0P27001	.07	10 ea
273165	273165-1	Jaw Slide	Black	3/4"	3/16"	0P27301	.04 / .08	10 ea / 10 pr
273166	273166-1	Jaw Slide	White	3/4"	3/16"	0P27301	.04 / .08	10 ea / 10 pr
273560	273560-1	Square Tube Jaw Slide	Black	1" x 1" (Outside)	3/16"	0P27301	.08 / .16	10 ea / 10 pr
273561	273561-1	Square Tube Jaw Slide	White	1" x 1" (Outside)	3/16"	0P27301	.08 / .16	10 ea / 10 pr

These Slide Fittings are used as part of a Bimini top system to install a new Bimini top to boat rails or for adding additional support arms to an existing top. Jaw Slides attach an eye end securely to support tubing. Square jaws fit 1" x 1" tubing commonly found on pontoon boats. Round jaws fit standard 7/8" or 3/4" tubing. Set screw on back allows you to quickly and easily adjust the placement of these slides where they are needed. Hinged Jaw Slides fit 7/8" tubing and are ideal for mounting on handrails, or in applications where it is not possible or convenient to slide the fitting onto the tubing. Constructed of UV resistant injection molded nylon. Available in black or white. \*Stainless tube wall thickness 0.049".

**⚠WARNING: Cancer and Reproductive Harm - [www.P65Warnings.ca.gov](http://www.P65Warnings.ca.gov)**

**TOP MOUNT HINGE FITTINGS**

Injection Molded Nylon



Bulk	Display	Description	Color	Base Width	Base Length	Pin Size	Screw Part #	Fastener	Wt.(lb.)	Std. Pack
273200	273200-1	Large Deck Hinge	Black	13/16"	2-7/16"	3/16"	0P27301	#10 FH	.04 / .08	10 ea / 10 pr
273201	273201-1	Large Deck Hinge	White	13/16"	2-7/16"	3/16"	0P27301	#10 FH	.04 / .08	10 ea / 10 pr
273205	273205-1	Small Deck Hinge	Black	13/16"	2-3/8"	3/16"	0P27301	#10 FH	.03 / .06	10 ea / 10 pr
273206	273206-1	Small Deck Hinge	White	13/16"	2-3/8"	3/16"	0P27301	#10 FH	.03 / .06	10 ea / 10 pr
273230	273230-1	Large Deck Hinge/10° Angled	Black	7/8"	2-7/16"	3/16"	0P27301	#10 FH	.04 / .08	10 ea / 10 pr
273231	273231-1	Large Deck Hinge/10° Angled	White	7/8"	2-7/16"	3/16"	0P27301	#10 FH	.04 / .08	10 ea / 10 pr
273240	273240-1	7/8" Concave Deck Hinge	Black	13/16"	2-7/16"	3/16"	0P27301	#10 FH	.06 / .12	10 ea / 10 pr
273241	273241-1	7/8" Concave Deck Hinge	White	13/16"	2-7/16"	3/16"	0P27301	#10 FH	.06 / .12	10 ea / 10 pr

Deck Hinges are designed to mount horizontally and attach an eye end secured to tubing in Bimini top applications. Concave Hinges are designed to rail mount on 7/8" tubing. Angled Hinges are used for mounting items on slanted surfaces like sloped gunwales. 3/16" pin size. Constructed of UV resistant injection molded nylon. Installs with two #10 FH fasteners (not included). Available in black or white.

**▲WARNING: Cancer and Reproductive Harm - [www.P65Warnings.ca.gov](http://www.P65Warnings.ca.gov)**

**SIDE MOUNT HINGE FITTINGS**

Injection Molded Nylon



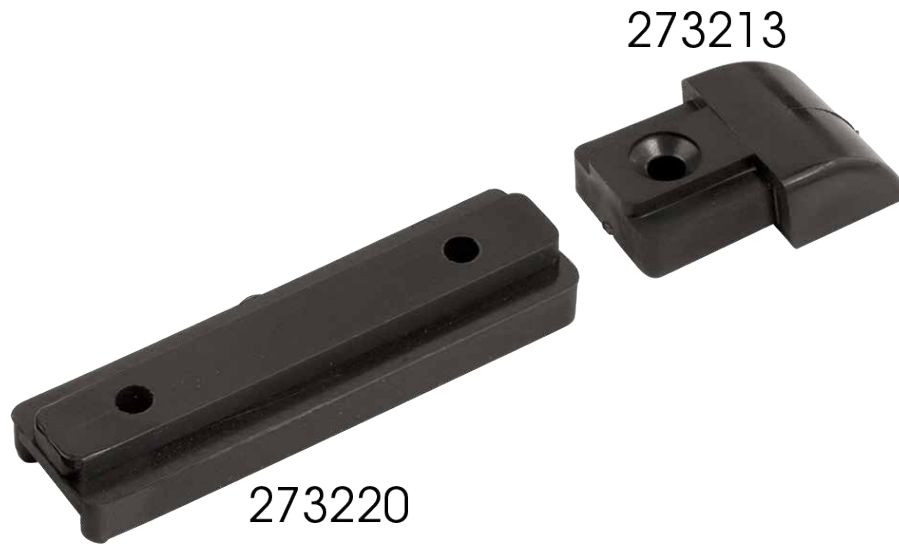
Bulk	Display	Description	Color	Base Width	Base Length	Pin Size	Pin/Screw Part #	Fastener	Wt.(lb.)	Std. Pack
273250	273250-1	Deck Hinge	Black	7/8"	2-7/16"	1/4"	0P27303	#10 FH	.04 / .08	10 ea / 10 pr
273251	273251-1	Deck Hinge	White	7/8"	2-7/16"	1/4"	0P27303	#10 FH	.04 / .08	10 ea / 10 pr
273255	273255-1	Four Hole Side Mount Deck Hinge	Black	1-3/4"	2"	1/4"	0P27303	#10 FH	.05 / .10	10 ea / 10 pr
273256	273256-1	Four Hole Side Mount Deck Hinge	White	1-3/4"	2"	1/4"	0P27303	#10 FH	.05 / .10	10 ea / 10 pr

Side Mount Hinge Fittings are designed to mount vertically and attach an eye end in Bimini top applications. 1/4" pin size. Constructed of UV resistant injection molded nylon. Installs with #10 FH fasteners (not included). Available in black or white.

**▲WARNING: Cancer and Reproductive Harm - [www.P65Warnings.ca.gov](http://www.P65Warnings.ca.gov)**

## TRACK FITTINGS

Injection Molded Nylon



Bulk	Display	Description	Color	Base Width	Base Length	Fastener	Wt.(lb.)	Std. Pack
273213	273213-1	.85 Track End Cap Stop	Black	7/8"	1-1/4"	#8 FH	.01 / .02	10 ea / 10 pr
273220	273220-1	.85 Track Slide	Black	11/16"	2-3/8"	n/a	.01 / .02	10 ea / 10 pr

Track Fittings can be used to add slide track to your boat. Track Slides convert standard hinge fittings for track use. End Caps establish the termination point of a Bimini slide assembly. Constructed of UV resistant injection molded nylon.

## TRACK MOUNT HINGE FITTINGS

Injection Molded Nylon



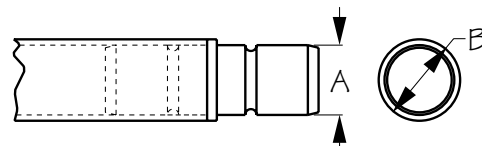
Bulk	Display	Description	Color	Base Width	Base Length	Pin Size	Screw #	Thumb Screw #	Wt.(lb.)	Std. Pack
273260	273260-1	Side Mount Slide - .85" Track	Black	7/8"	2-1/4"	1/4"	0P27303	n/a	.05 / .10	10 ea / 10 pr
273261	273261-1	Side Mount Slide - .85" Track	White	7/8"	2-1/4"	1/4"	0P27303	n/a	.05 / .10	10 ea / 10 pr
273265	273265-1	Side Mount Slide - 1.05" Track	Black	1"	2-1/4"	1/4"	0P27303	n/a	.05 / .10	10 ea / 10 pr
273270	273270-1	Deck Hinge Slide - .85" Track	Black	7/8"	2-7/16"	3/16"	0P27301	n/a	.05 / .10	10 ea / 10 pr
n/a	273285-1	Prt & Stbd Lock Dk Hinge Slide - .85" Trk	Black	7/8"	2-7/16"	3/16"	0P27301	0P27302	.12	10 pr
n/a	273286-1	Prt & Stbd Lock Dk Hinge Slide - .85" Trk	White	7/8"	2-7/16"	3/16"	0P27301	0P27302	.12	10 pr
273295	273295-1	Track Slide Lock - .85"	Black	11/16"	13/16"	n/a	n/a	0P27302	.02 / .04	10 ea / 10 pr
273296	273296-1	Track Slide Lock - .85"	White	11/16"	13/16"	n/a	n/a	0P27302	.02 / .04	10 ea / 10 pr
273630	273630-1	Curved Windshield Hinge	Black	n/a	n/a	3/16"	0P27301	n/a	.07 / .14	10 ea / 10 pr

Track Mount Hinge Fittings provide slide adjustment for the convenient use and storage of Bimini top frames. Designed to attach an eye end. Use Side Mount Sliders for vertical mounting or Deck Mount Sliders for horizontal mounting. Functions as an alternative to a brace kit. Locking Deck Hinges utilize a flister screw to lock hinge in place. Track Slide Locks create a termination point. For use in 0.850 or 1.050 track. 1/4" or 3/16" pin size. Constructed of UV resistant injection molded nylon. Available in black and white.

**⚠WARNING: Cancer and Reproductive Harm - [www.P65Warnings.ca.gov](http://www.P65Warnings.ca.gov)**

**TUBE CONNECTORS**

Injection Molded Nylon



Bulk	Display	Description	Color	A	B (Tube O.D.*)	Length	Wt.(lb.)	Std. Pack
273300	273300-1	Tube Connector	Black	3/4"	7/8"	2-1/4"	.04 / .08	10 ea / 10 pr

Tube Connectors are used for connecting the ends of stainless steel or aluminum tubing by sliding inside the tube. Fits 7/8" O.D. tubing. Constructed of UV resistant injection molded nylon. \*Stainless tube wall thickness 0.049".

**QUICK RELEASE SIDE MOUNT EYE END & BRACKET**

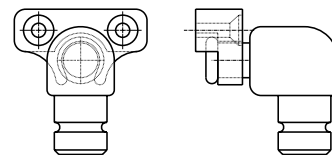
Injection Molded Nylon



273369  
273370



273350  
273351

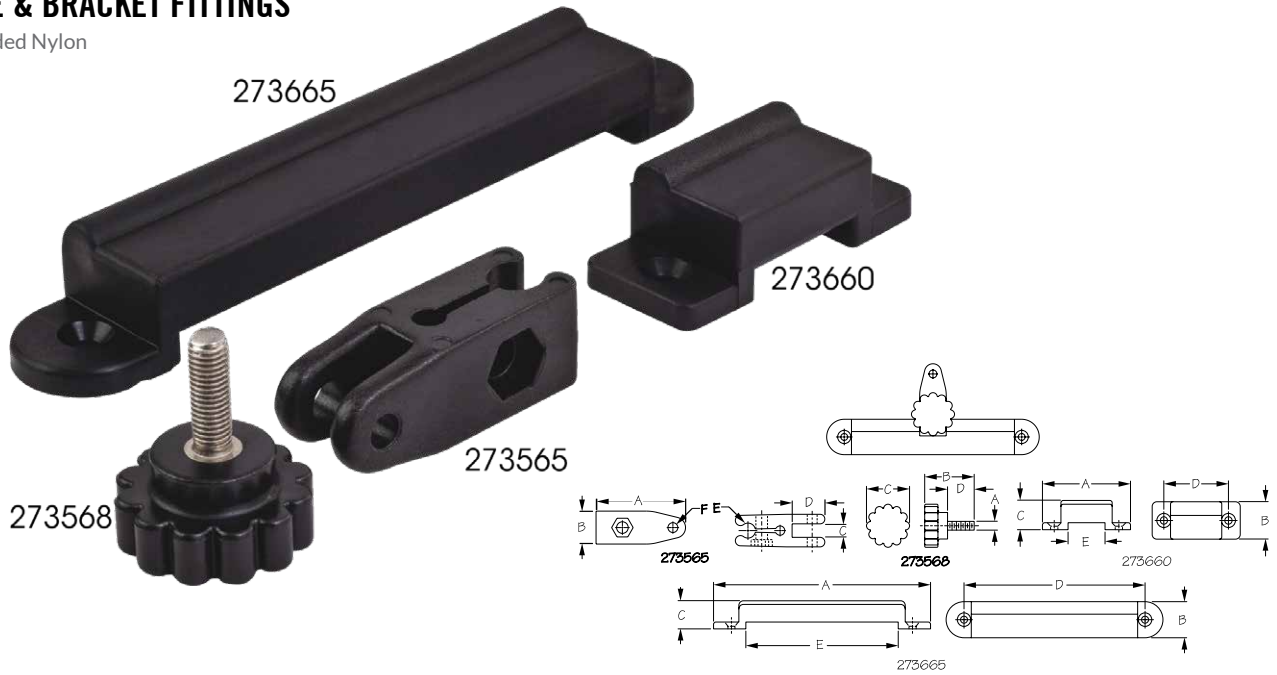


Bulk	Display	Description	Color	Tube O.D.*	Hole Space	Fastener	Wt.(lb.)	Std. Pack
273350	273350-1	90° Inside Eye End	Black	3/4"	n/a	n/a	.03 / .06	10 ea / 10 pr
273351	273351-1	90° Inside Eye End	White	3/4"	n/a	n/a	.03 / .06	10 ea / 10 pr
273369	273369-1	90° Inside Eye Bracket	Black	n/a	15/16"	#8 FH	.01 / .02	10 ea / 10 pr
273370	273370-1	90° Inside Eye Bracket	White	n/a	15/16"	#8 FH	.01 / .02	10 ea / 10 pr

The Side Mount Eye End used in conjunction with an Eye Mount Bracket converts standard internal eyes into quick release fittings. These 90° eye ends fit 3/4" OD tubing. Constructed of UV resistant injection molded nylon. Bracket installs with two #8 FH fasteners (not included). Available in black or white. \*Stainless tube wall thickness 0.049".

## JAW SLIDE & BRACKET FITTINGS

Injection Molded Nylon



Bulk	Display	Description	A	B	C	D	E	F	Wt.(lb.)	Std. Pack
273565	273565-1	Bracket Mount Jaw Slide	2-1/16"	3/4"	5/16"	3/4"	3/8"	1/4"	.03 / .06	10 ea / 10 pr
273568	273568-1	Head Screw	1/4"-28	1-3/8"	1-3/16"	3/4"	n/a	n/a	.03 / .06	10 ea / 10 pr
273660	273660-1	Slide Bracket	2-3/8"	1"	13/16"	1-11/16"	1"	n/a	.03 / .06	10 ea / 10 pr
273665	273665-1	Slide Bracket	6"	1"	3/4"	5"	4-3/16"	n/a	.06 / .12	10 ea / 10 pr

These Jaw Slide & Bracket Fittings are components in a Bimini top fitting system. Bracket Fittings are designed to mount on the side of the gunnel for a jaw slide to snap onto. The jaw slide then glides along the bracket and is adjusted and secured by the head screw. Constructed of UV resistant injection molded nylon. Brackets install with two #8 FH fasteners (not included).

## TOP FITTINGS

Investment Cast 316 Stainless Steel



Bulk	Display	Description	Tube O.D.*	Pin Size	Wt.(lb.)	Std. Pack
270100	270100-1	Top Cap	7/8"	1/4"	.20	10 ea
270101	270101-1	Top Cap	1"	1/4"	.28	10 ea
270102	n/a	Top Cap	1-1/4"	5/16"	.44	10 ea
270103	n/a	Top Cap	1-1/8"	5/16"	.26	10 ea
270111	270111-1	Top Cap Heavy Duty	1"	5/16"	.23	10 ea
270175	270175-1	Top Insert	3/4"	1/4"	.09	10 ea
270180	270180-1	Top Insert	7/8"	1/4"	.15	10 ea
270191	270191-1	Square Tube Top Insert	1-1/4" (1" x 1" inside)	1/4"	.19	10 ea

Top Fittings create an attachment point and function as a pivot point as part of a Bimini top system. For use as a top cap for 7/8"-1-1/8" round tubing or as an insert for 3/4" or 7/8" OD tubing. Also available as an insert for 1-1/4" square tubing (1" x 1" inside dimensions) commonly found on pontoon boats. 1/4" or 5/16" pin size. Set screws can be purchased separately (299999-1). Requires 1/8" Allen wrench to install. Constructed of corrosion resistant investment cast 316 stainless steel. \*Stainless tube wall thickness 0.049".



**SLIDE FITTINGS**

Investment Cast 316 Stainless Steel



Bulk	Display	Description	Tube O.D.*	Pin Size	Pin/Screw Part #	Wt.(lb.)	Std. Pack
270160	270160-1	Jaw Slide with Bolt	7/8"	1/4"	0P27001	.27	10 ea
270161	270161-1	Jaw Slide with Bolt	1"	1/4"	0P27001	.29	10 ea
270162	n/a	Jaw Slide with Bolt	1-1/4"	5/16"	0P27003	.42	10 ea
270163	n/a	Jaw Slide with Bolt	1-1/8"	5/16"	0P27003	.30	10 ea
270165	270165-1	Jaw Slide with Bolt	3/4"	1/4"	0P27001	.15	10 ea
270166	270166-1	Hinged Jaw Slide with Bolt	7/8"	1/4"	0P27001	.29	10 ea
270167	270167-1	Hinged Jaw Slide with Bolt	1"	1/4"	0P27001	.38	10 ea
270168	n/a	Hinged Jaw Slide with Bolt	1-1/8"	5/16"	0P27003	.37	10 ea
270171	270171-1	Jaw Slide with Bolt-Heavy Duty	1"	5/16"	0P27003	.28	10 ea

These Slide Fittings are used as part of a Bimini top system to install a new Bimini top, adding additional support arms to an existing one, or customizing a cock pit or sun deck awning. Jaw Slides attach an eye end securely to support tubing. Set screw on back allows you to quickly and easily adjust the placement of these slides where they are needed. Hinged Jaw Slides are ideal for mounting on handrails, or in applications where it is not possible or convenient to slide the fitting onto the tubing. Jaw Slides fit tubing from 3/4" - 1-1/8". Set screws can be purchased separately (299999-1). Requires 1/8" Allen wrench to install. Constructed of corrosion resistant investment cast 316 stainless steel. \*Stainless tube wall thickness 0.049".

**TOP MOUNT HINGE FITTINGS**

Investment Cast 316 Stainless Steel



Bulk	Display	Description	Base	Pin Size	Pin/Screw Part #	Fastener	Wt.(lb.)	Std. Pack
270200	270200-1	90° Deck Hinge	3/4" x 2-1/4"	1/4"	0P27001	#10 FH	.24	10 ea
270205	270205-1	90° Deck Hinge Heavy Duty	1" x 2-1/16"	5/16"	0P27004	1/4" FH	.24	10 ea
270210	270210-1	90° Deck Hinge (Removable Pin)	3/4" x 2-1/4"	1/4"	0P27002	#10 FH	.23	10 ea
270230	270230-1	10° Angle Base Deck Hinge	3/4" x 2-1/4"	1/4"	0P27001	#10 FH	.23	10 ea
270235	270235-1	10° Angle Base Deck Hinge (Removable Pin)	3/4" x 2-1/4"	1/4"	0P27002	#10 FH	.23	10 ea
270240	270240-1	1" Concave Base Deck Hinge	3/4" x 2-1/4"	1/4"	0P27001	#10 FH	.19	10 ea
270245	270245-1	1" Concave Base Deck Hinge (Removable Pin)	3/4" x 2-1/4"	1/4"	0P27002	#10 FH	.19	10 ea
270260	270260-1	180° Adjustable Angle Deck Hinge	1" x 2-3/4"	1/4"	0P27001	#10 FH	.10	10 ea

These Top Mount Hinge Fittings are designed to mount horizontally and attach an eye end in Bimini top applications. Concave Hinges are designed to rail mount on 1" tubing. Angled Hinges are used for mounting items on slanted surfaces like sloped gunwales. 180° Adjustable Hinge allows universal mounting at almost any angle including vertical mounting. Removable Pin Deck Hinges feature a spring loaded quick release pin for easy top removal. 1/4" or 5/16" pin size. Constructed of corrosion resistant investment cast 316 stainless steel. Installs with two FH fasteners (not included).

## SIDE MOUNT HINGE FITTINGS

Investment Cast 316 Stainless Steel



Bulk	Display	Description	Base	Pin Size	Pin/Screw Part #	Fastener	Wt.(lb.)	Std. Pack
270250	270250-1	Side Mount Deck Hinge	7/8" x 2"	1/4"	0P27006	#10 FH	.14	10 ea
270255	270255-1	Side Mount Deck Hinge - Heavy Duty	1-7/8" x 2-13/16"	5/16"	0P27005	1/4" FH	.33	10 ea

Side Mount Hinge Fittings are designed to mount vertically and attach an eye end in Bimini top applications. 1/4" or 5/16" pin size. Constructed of corrosion resistant investment cast 316 stainless steel. Installs with FH fasteners (not included).

## LIFELINE FITTINGS

Investment Cast 316 Stainless Steel



Bulk	Display	Description	Tube O.D.*	Base	Eye Diameter	Pin Size	Pin/Screw #	Fastener	Wt.(lb.)	Std. Pack
270500	270500-1	Stanchion Eye Insert	1"	n/a	1/2"	n/a	n/a	n/a	.18	10 ea
270505	270505-1	Stanchion Eye	1"	n/a	1/2"	n/a	n/a	n/a	.21	10 ea
270510	270510-1	Stanchion Cap	7/8"	n/a	5/16"	n/a	n/a	n/a	.21	10 ea
270511	270511-1	Stanchion Cap	1"	n/a	5/16"	n/a	n/a	n/a	.21	10 ea
270520	270520-1	Clevis Slide	7/8"	n/a	n/a	1/4"	0P27007	n/a	.20	10 ea
270521	270521-1	Clevis Slide	1"	n/a	n/a	1/4"	0P27007	n/a	.23	10 ea
270530	270530-1	Stanchion Sleeve with Eye	7/8"	n/a	3/8"	n/a	n/a	n/a	.17	10 ea
270531	270531-1	Stanchion Sleeve with Eye	1"	n/a	3/8"	n/a	n/a	n/a	.30	10 ea
270540	270540-1	4° Rectangular Base	1"	2-13/16" x 3-9/16"	n/a	n/a	n/a	1/4" FH	1.13	5 ea
270550	270550-1	Life Line Base	n/a	2-7/16" x 1-1/2"	7/16"	n/a	n/a	#10 FH	.24	10 ea
270560	270560-1	Jaw Socket (Wire Size 5/16")	n/a	n/a	n/a	3/16"	0P27008	n/a	.11	10 ea

These Lifeline Fittings are constructed of corrosion resistant investment cast 316 stainless steel. Bases install with FH fasteners (not included). Set screws can be purchased separately (299999-1). Requires 1/8" Allen wrench to install. \*Stainless tube wall thickness 0.049".



**RAIL BASE FITTINGS - ROUND**

Investment Cast 316 Stainless Steel

Bulk	Display	Description	Tube O.D.*	Base	Fastener	Wt.(lb.)	Std. Pack
280300	280300-1	30° Round Base	7/8"	2-5/8"	#10 FH	.50	10 ea
280301	280301-1	30° Round Base	1"	2-3/4"	1/4" FH	.50	10 ea
280450	280450-1	45° Round Base	7/8"	2-5/8"	#10 FH	.50	10 ea
280451	280451-1	45° Round Base	1"	2-3/4"	1/4" FH	.54	10 ea
280600	280600-1	60° Round Base	7/8"	2-5/8"	#10 FH	.55	10 ea
280601	280601-1	60° Round Base	1"	2-3/4"	1/4" FH	.49	10 ea
280900	280900-1	90° Round Base	7/8"	2-5/8"	#10 FH	.49	10 ea
280901	280901-1	90° Round Base	1"	2-3/4"	1/4" FH	.58	10 ea
280921	280921-1	90° Low Round Base	1"	2-3/4"	1/4" FH	.36	10 ea

These Round Rail Base Fittings include set screws where appropriate. Set screws can be purchased separately (299999-1). Requires 1/8" Allen wrench to install. Constructed of corrosion resistant investment cast 316 stainless steel. Installs with three FH fasteners (not included). \*Stainless tube wall thickness 0.049".



**RAIL BASE FITTINGS - RECTANGULAR**

Investment Cast 316 Stainless Steel

Bulk	Display	Description	Tube O.D.*	Base	Fastener	Wt.(lb.)	Std. Pack
281300	281300-1	30° Rectangular Base	7/8"	1-3/4" x 2-5/8"	#10 FH	.43	10 ea
281301	281301-1	30° Rectangular Base	1"	1-7/8" x 3-3/16"	1/4" FH	.51	10 ea
281450	281450-1	45° Rectangular Base	7/8"	1-11/16" x 3"	#10 FH	.42	10 ea
281451	281451-1	45° Rectangular Base	1"	1-7/8" x 3-1/4"	1/4" FH	.59	10 ea
281600	281600-1	60° Rectangular Base	7/8"	1-3/4" x 3-1/16"	#10 FH	.48	10 ea
281601	281601-1	60° Rectangular Base	1"	1-7/8" x 3-1/4"	1/4" FH	.57	10 ea
281900	281900-1	90° Rectangular Base	7/8"	1-11/16" x 3"	#10 FH	.42	10 ea
281901	281901-1	90° Rectangular Base	1"	1-7/8" x 3-3/16"	1/4" FH	.53	10 ea
281931	281931-1	90° Volcano Base	1"	2-1/16" x 3"	1/4" FH	.46	10 ea
281936	281936-1	90° Volcano Base	1"	3-11/16" x 3-3/8"	1/4" FH	.97	10 ea

These Rectangular Rail Base Fittings include set screws where appropriate. Set screws can be purchased separately (299999-1). Requires 1/8" Allen wrench to install. Constructed of corrosion resistant investment cast 316 stainless steel. Installs with four FH fasteners (not included). \*Stainless tube wall thickness 0.049".

## HANDRAIL FITTINGS

Investment Cast 316 Stainless S



Bulk	Display	Description	Rail Height	Tube O.D.*	Fastener	Wt.(lb.)	Std. Pack
285060	285060-1	60° Center	1-13/16"	7/8"	#10 FH	.28	10 ea
285061	285061-1	60° Center	1-7/8"	1"	1/4" FH	.34	10 ea
285065	285065-1	60° Center - Left (Port) Inside Set Screw	1-13/16"	7/8"	#10 FH	.28	10 ea
285066	285066-1	60° Center - Right (Starboard) Inside Set Screw	1-13/16"	7/8"	#10 FH	.27	10 ea
285120	285120-1	120° End	1-13/16"	7/8"	#10 FH	.28	10 ea
285160	285160-1	60° End	1-13/16"	7/8"	#10 FH	.31	10 ea
285161	285161-1	60° End	1-7/8"	1"	1/4" FH	.38	10 ea
285165	285165-1	60° End - Left (Port) Inside Set Screw	1-13/16"	7/8"	#10 FH	.29	10 ea
285166	285166-1	60° End - Right (Starboard) Inside Set Screw	1-13/16"	7/8"	#10 FH	.30	10 ea
288280	288280-1	Rail Standoff	2-1/4"	7/8"	5/16" Bolt	.11	10 ea
288290	288290-1	Bullet End	n/a	7/8"	n/a	.11	10 ea
288291	n/a	Bullet End	n/a	1"	n/a	.13	10 ea
289900	289900-1	90° End - Bottom Mounted	1-7/8"	7/8"	1/4" - 28 Bolt	.82	5 ea
289901	289901-1	90° End - Bottom Mounted	1-7/8"	1"	1/4" - 28 Bolt	1.16	5 ea
289905	289905-1	60° Center - Bottom Mounted	1-7/8"	7/8"	1/4" - 28 Bolt	.31	5 ea

These Handrail Fittings are designed to be used in conjunction with 7/8" or 1" OD stainless tubing to create custom handrails. Constructed of corrosion resistant investment cast 316 stainless steel. Includes set screws where appropriate. Set screws can be purchased separately (299999-1). Requires 1/8" Allen wrench. Installs with FH fasteners (not included). \*Stainless tube wall thickness 0.049".

## HANDRAIL END FITTINGS

Investment Cast 316 Stainless Steel



Bulk	Display	Description	Tube O.D.*	Fastener	Wt.(lb.)	Std. Pack
289055	289055-1	5-1/2° Rail (End Out)	7/8"	#10 FH	.61	5 ea
289155	289155-1	5-1/2° Rail (End In)	7/8"	#10 FH	.48	5 ea
289165	289165-1	16-1/2° Rail (End Out)	7/8"	#10 FH	.44	5 ea

These Handrail End Fittings are for use in terminating hand rails. Includes set screws where appropriate. Set screws can be purchased separately (299999-1). Requires 1/8" Allen wrench to install. Constructed of corrosion resistant investment cast 316 stainless steel. Installs with two #10 FH fasteners (not included). \*Stainless tube wall thickness 0.049".

**HANDRAIL TEES**

Investment Cast 316 Stainless Steel



Bulk	Display	Description	Tube O.D.*	Wt.(lb.)	Std. Pack
290600	290600-1	60° Universal Tee	7/8"	.39	10 ea
290601	290601-1	60° Universal Tee	1"	.46	10 ea
290603	290603-1	60° Hinged Tee	7/8"	.53	10 ea
290604	290604-1	60° Hinged Tee	1"	.70	10 ea
290900	290900-1	90° Universal Tee	7/8"	.34	10 ea
290901	290901-1	90° Universal Tee	1"	.38	10 ea
290903	290903-1	90° Hinged Tee	7/8"	.53	10 ea
290904	290904-1	90° Hinged Tee	1"	.58	10 ea
291600	291600-1	60° Tee - Left (Port) Inside Set Screws	7/8"	.34	10 ea
291601	291601-1	60° Tee - Left (Port) Inside Set Screws	1"	.43	10 ea
292600	292600-1	60° Tee - Right (Starboard) Inside Set Screws	7/8"	.31	10 ea
292601	292601-1	60° Tee - Right (Starboard) Inside Set Screws	1"	.42	10 ea
293100	293100-1	3 - Way Corner Fitting	7/8"	.47	5 ea
293101	293101-1	3 - Way Corner Fitting	1"	.57	5 ea
293131	293131-1	4 - Way Corner Fitting	1"	.70	5 ea
293141	293141-1	4 - Way Tee	1"	.48	5 ea

These Handrail Tee fittings create directionality in hand rail applications. Includes set screws where appropriate. Set screws can be purchased separately (299999-1). Requires 1/8" Allen wrench to install. Constructed of corrosion resistant investment cast 316 stainless steel. \*Stainless tube wall thickness 0.049".

**RAIL TEES, ELBOWS & BOW FORMS**

Investment Cast 316 Stainless Steel



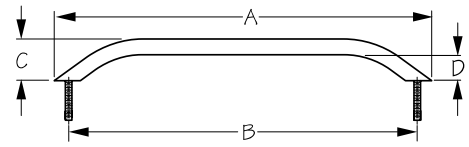
Bulk	Display	Description	Tube O.D.*	Degree	Wt.(lb.)	Std. Pack
293190	293190-1	Cable Anchor	7/8"	90°	.43	5 ea
293191	293191-1	Cable Anchor	1"	90°	.47	5 ea
295090	295090-1	Elbow	7/8"	90°	.34	10 ea
295091	295091-1	Elbow	1"	90°	.44	10 ea
295095	295095-1	Elbow & Anchor Eye	7/8"	90°	.47	5 ea
295096	295096-1	Elbow & Anchor Eye	1"	90°	.49	5 ea
295110	295110-1	Bow Form	7/8"	110°	.66	5 ea
295111	295111-1	Bow Form	1"	110°	.89	5 ea
295125	295125-1	Bow Form	7/8"	125°	.56	5 ea
295126	295126-1	Bow Form	1"	125°	.76	5 ea
295140	295140-1	Bow Form	7/8"	140°	.53	5 ea

These Rail Tees, Elbows, & Bow Forms can be attached to railing with set screws or pop riveted using stainless or aluminum rivets. Includes set screws where appropriate. Set screws can be purchased separately (299999-1). Requires 1/8" Allen wrench to install. Mounting hole in 110° Bow Form is designed to fit 1/2" diameter flagpoles. Constructed of corrosion resistant investment cast 316 stainless steel. \*Stainless tube wall thickness 0.049".



## STUD MOUNT HANDRAIL

Formed 304 Stainless Steel



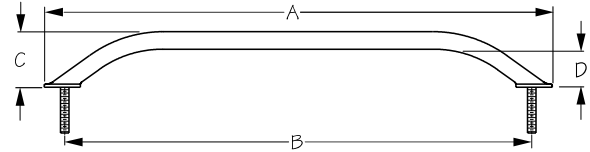
Bulk	Display	A	B	C	D	Finish	Tube O.D.	Fastener	Wt.(lb.)	Std. Pack
254106	254106-1	7-1/4"	6"	1-1/2"	1"	Stainless	3/4"	5/16"-18 Nut	.33	5 ea
254112	254112-1	12"	10-3/4"	2"	1-1/4"	Stainless	3/4"	5/16"-18 Nut	.46	5 ea
254118	254118-1	18-1/2"	16-3/4"	2"	1-1/4"	Stainless	3/4"	5/16"-18 Nut	.64	5 ea
254124	254124-1	24"	22-1/2"	2"	1-1/4"	Stainless	3/4"	5/16"-18 Nut	.80	5 ea

These Stud Mounted Handrails are designed to provide a sleek, smooth handrail transition to the mounting surface of your boat. Functional and attractive, with no visible mounting hardware. Features integral 5/16"-18 x 1-15/16" threaded studs. Constructed of corrosion resistant formed 304 stainless steel. Installs with two 5/16"-18 nuts (not included).



## STUD MOUNT FLANGED HANDRAIL

Formed 304 Stainless Steel



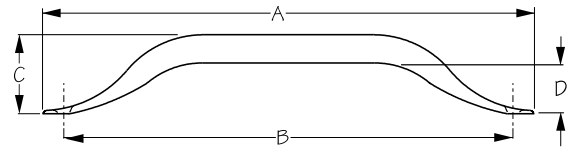
Bulk	Display	A	B	C	D	Finish	Tube O.D.	Fastener	Wt.(lb.)	Std. Pack
254209	254209-1	10"	8-3/4"	2-1/4"	1-1/2"	Stainless	7/8"	5/16"-18 Nut	.44	5 ea
254212	254212-1	13-1/2"	12"	2-1/4"	1-1/2"	Stainless	7/8"	5/16"-18 Nut	.53	5 ea
254218	254218-1	19-3/8"	18"	2-1/4"	1-1/2"	Stainless	7/8"	5/16"-18 Nut	.70	5 ea
254224	254224-1	25-1/4"	24-1/4"	2-1/4"	1-1/2"	Stainless	7/8"	5/16"-18 Nut	.76	5 ea

These Stud Mounted Flanged Handrails provide a larger mounting surface for greater stability. Functional and attractive, with no visible mounting hardware. Features integral 5/16"-18 x 1-5/8" threaded studs. Constructed of corrosion resistant formed 304 stainless steel. Installs with two 5/16"-18 nuts (not included).



## SURFACE MOUNT HANDRAIL

Formed 304 Stainless Steel



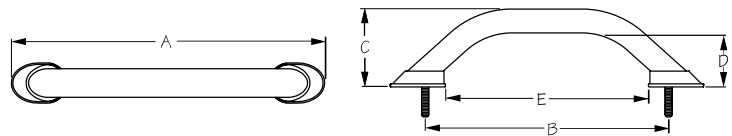
Bulk	Display	A	B	C	D	Finish	Tube O.D.	Fastener	Wt.(lb.)	Std. Pack
254312	254312-1	12"	11"	2-7/16"	1-1/2"	Stainless	1"	5/16" FH	.50	5 ea
254318	254318-1	17-11/16"	16-5/8"	2-1/2"	1-5/8"	Stainless	1"	5/16" FH	.70	5 ea
254324	254324-1	23-7/8"	22-3/4"	2-3/8"	1-5/8"	Stainless	1"	5/16" FH	.83	5 ea

These Surface Mount Handrails allow you to locate a hand rail quickly and conveniently wherever needed. 1" OD tubing for a comfortable grip. Constructed of corrosion resistant formed 304 stainless steel. Install with two 5/16" FH fasteners (not included).



## LED STUD MOUNT HANDRAIL

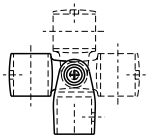
Formed 304 Stainless Steel



Bulk	Display	A	B	C	D	E	LED Color	Fastener	Wt.(lb.)	Std. Pack
254509	254509-1	10"	7-7/8"	2-1/2"	1-3/4"	6-1/2"	Blue	5/16"-18 Nut	.40	5 ea
254512	254512-1	13"	10-7/8"	2-1/2"	1-3/4"	9-1/2"	Blue	5/16"-18 Nut	.51	5 ea
254518	254518-1	19"	16-7/8"	2-1/2"	1-3/4"	15-1/2"	Blue	5/16"-18 Nut	.69	5 ea

These LED Stud Mount Handrails feature six blue LEDs per base for night visibility. Functional and attractive, with no visible mounting hardware. Shipped as three pieces - one handrail and two bases. Features integral 5/16"-18 x 1" threaded studs. Constructed of corrosion resistant formed 304 stainless steel. Installs with two 5/16"-18 nuts (not included). 12 VDC.

**⚠WARNING: Cancer and Reproductive Harm - www.P65Warnings.ca.gov**



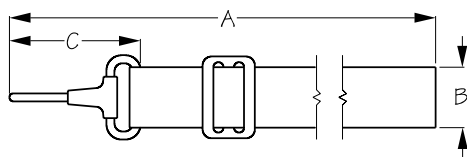
### CLEVIS SLIDE/TOP CAP UNIT

Investment Cast 316 Stainless Steel



Bulk	Display	Tube O.D.*	Pin Size	Pin/Screw Part #	Wt.(lb.)	Std. Pack
270121	270121-1	1"	1/4"	0P27007	.58	10 ea

This Clevis Slide/Top Cap Unit is designed for use with 1" OD tubing, 1/4" pin size. Constructed of corrosion resistant investment cast 316 stainless steel. \*Stainless tube wall thickness 0.049".



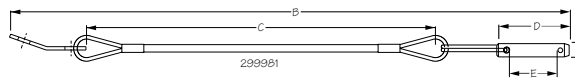
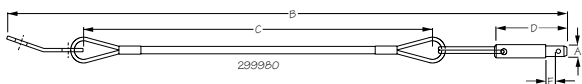
### BIMINI STRAP

Nylon Webbing/Stainless Steel



Bulk	Display	A	B	C	Color	Wt.(lb.)	Std. Pack
298172	298172-1	8'	1"	2-1/8"	Black	.12	10 pr

Nylon Bimini Straps are used to replace lost or damaged Bimini top straps. Constructed of 1" wide nylon webbing with corrosion resistant stainless snap hooks. 8' long.



### RELEASE PIN & LANYARD

Formed 304 Stainless Steel

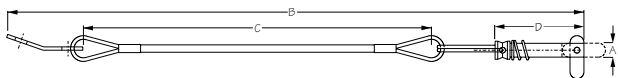


Bulk	Display	A	B	C	D	E	Type	Wt.(lb.)	Std. Pack
299980	299980-1	1/4" - 3/16"	10"	6"	1-3/8"	3/16"	Stepped	.04	10 ea
299981	299981-1	1/4"	10"	6"	1-3/8"	15/16"	Straight	.04	10 ea

Release Pins feature a detent ball for quick release. For use with Bimini top hardware. Available with a straight or stepped pin. Stepped version fits threaded hinge fittings. Attached lanyard reduces risk of loss. Constructed of corrosion resistant formed 304 stainless steel.

### TOGGLE PIN & LANYARD - STRAIGHT

304 Stainless Steel



Bulk	Display	A	B	C	D	Wt.(lb.)	Std. Pack
299986	299986-1	1/4"	10"	6"	1-3/8"	.03	10 ea

L-shaped Toggle Pin features a swivel flip lock for use with Bimini top hardware. For added security, the hinge prevents the 1/4" pin from being withdrawn from the fitting until the locking device is in line with the pin. Attached lanyard reduces risk of loss. Constructed of corrosion resistant 304 stainless steel.



## RAIL FITTINGS REPLACEMENT PARTS

304 Stainless Steel/Nylon



OP27001



OP27002



OP27003



OP27004



OP27005



OP27006



OP27007



OP27008



OP27301



OP27302



OP27303



OP27306



OP27601



273298  
273299



273309



299999

Bulk	Display	Description	Wt.(lb.)	Std. Pack
OP27001	OP27001-1	Screw for 270160, 270161, 270200, 270230, & 270240	.01 / .02	10 ea / 10 pr
OP27002	OP27002-1	Toggle Pin for Deck Hinges, 270210, 270235, & 270245	.01 / .02	10 ea / 10 pr
OP27003	OP27003-1	Screw for 270171	.01 / .02	10 ea / 10 pr
OP27004	OP27004-1	Screw for 270205	.01 / .02	10 ea / 10 pr
OP27005	OP27005-1	Bolt for 270255	.01 / .02	10 ea / 10 pr
OP27006	OP27006-1	Screw for 270250	.01 / .02	10 ea / 10 pr
OP27007	OP27007-1	Bolt for 270520 & 270521	.01 / .02	10 ea / 10 pr
OP27008	OP27008-1	Pin & Split Ring for 270560	.01 / .02	10 ea / 10 pr
OP27301	OP27301-1	Screw for 273160 & 273291	.01 / .02	10 ea / 10 pr
OP27302	OP27302-1	Thumbscrew for 273290 & 273295	.01 / .02	10 ea / 10 pr
OP27303	OP27303-1	Screw for 273250 & 273271	.01 / .02	10 ea / 10 pr
OP27306	n/a	1/4"-20 x 5/16" Cupped Point Hex Drive	.01	10 ea
OP27601	OP27601-1	Screw for 276160, 276200, & 276250	.01 / .02	10 ea / 10 pr
273298	273298-1	Head Screw - 1/4"-20 x 7/8" (Black) for 273250 thru 273266	.02 / .04	10 ea / 10 pr
273299	273299-1	Head Screw - 1/4"-20 x 7/8" (White) for 273250 thru 273266	.02 / .04	10 ea / 10 pr
273309	273309-1	Head Screw - 1/4"-20 x 1/2" (White) for all Side Mount Deck Hinges	.01 / .02	10 ea / 10 pr
299999	299999-1	1/4"-28 x 3/16" Cone Point Hex Drive	.01 / .10	100 ea / 10 sets



**CANVAS FASTENERS**

Nickel Plated Brass



Bulk	Display	Photo #	Description	Wt.(lb.)	Std. Pack
n/a	299101-1	1 & 2	Canvas Socket - 7/32" (3/set) & Back Plate (3/set)	.03	10 sets
n/a	299102-1	3 & 4	Canvas Stud - 2 Prong Clinch (4/set) & Washer (4/set)	.04	10 sets
n/a	299103-1	5 & 6	Canvas Stud - Eyelet Type (4/set) & Washer (4/set)	.04	10 sets
299104	299104-1	16	Canvas Stud (#8 Wood Screw) 1/2" (5/set)	.05	100 ea / 10 sets
n/a	299107-1	17	Canvas Stud (#8-32 Machine Screw) 3/8" (5 /set)	.05	10 sets
n/a	299108-1	7 & 8	Canvas Snap Cap - 1/4" (6/set) & Socket (6/set)	.06	10 sets
n/a	299109-1	9 & 8	Canvas Snap Cap - 5/16" (6/set) & Socket (6/set)	.06	10 sets
n/a	299110-1	10 & 15	Canvas Snap Stud - Standard (6/set) & Snap Post - 1/4" (6/set)	.06	10 sets
n/a	299111-1	18	Canvas Snap Stud (#8 Sheet Metal Screw) 3/8" (6/set)	.06	10 sets
n/a	299112-1	19	Canvas Snap Stud (#8 Sheet Metal Screw) 5/8" (6/set)	.06	10 sets
299113	299113-1	20	Canvas Snap Stud (#10 Sheet Metal Screw) 5/8" (6/set)	.01 / .06	100 ea / 10 sets
299114	299114-1	21	Canvas Snap Stud (#8 Sheet Metal Self Tap Screw) 1/2" (6/set)	.01 / .06	100 ea / 10 sets
n/a	299115-1	22	Canvas Snap Stud (#10-32 Machine Screw) 3/8" (5/set)	.05	10 sets
299116	299116-1	23	Snap Turn Buckle - 2 Screw Base (2/set)	.02	100 ea / 10 pr
n/a	299117-1	11 & 12	Snap Turn Buckle - 2 Prong Clinch (2/set) & Back Plate (2/set)	.02	10 sets
n/a	299118-1	13 & 14	Snap Turn Buckle Eyelet (2/set) & Washer (2/set)	.02	10 sets
n/a	299119-1	24	Snap Turn Buckle (#7 Brass Wood Screw) 5/8" (2/set)	.04	10 pr
n/a	299120-1	25	Canvas Snap Hand Punch & Base	.10	10 sets
n/a	299124-1	26	S.S. Windshield Clip - 3/4" Base (4/set)	.04	10 sets
n/a	299125-1	27	S.S. Windshield Clip - 7/8" Base (4/set)	.04	10 sets
273670	273670-1	28	Nylon Windshield Canvas Stud Clip - Black	.02	10 ea / 10 pr
299151	n/a	1	Canvas Socket-Standard Leg 7/32"	.01	100 ea
299152	n/a	2	Back Plate for 299151	.01	100 ea
299153	n/a	3	Canvas Stud - Two Prong Clinch	.01	100 ea
299154	n/a	4	Washer for 299153	.01	100 ea
299155	n/a	5	Canvas Stud - Eyelet Type	.01	100 ea
299156	n/a	6	Washer for 299155	.01	100 ea
299157	n/a	7	Canvas Snap Cap - Standard 1/4"	.01	100 ea
299158	n/a	8	Canvas Snap Socket - Standard	.01	100 ea
299159	n/a	9	Canvas Snap Cap - Long Barrel 5/16"	.01	100 ea
299162	n/a	10	Canvas Snap Stud - Standard	.01	100 ea
299163	n/a	11	Snap Turn Buckle - Single Two Prong Clinch	.01	100 ea
299164	n/a	12	Back Plate for 299163	.01	100 ea
299165	n/a	13	Snap Turn Buckle Eyelet	.01	100 ea
299166	n/a	14	Washer for 299165	.01	100 ea
299199	n/a	15	Canvas Snap Post 1/4" for 299162	.01	100 ea

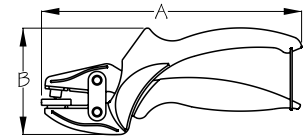
Canvas Fasteners feature excellent snap action and holding strength. Easy Installation. With a variety of thread lengths, studs are adaptable to a wide range of material thicknesses. Constructed of nickel plated brass.

**▲WARNING: Cancer and Reproductive Harm - [www.P65Warnings.ca.gov](http://www.P65Warnings.ca.gov)**



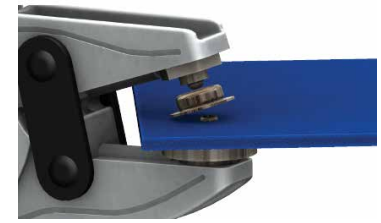
## CANVAS SNAP TOOL

Aluminum/Steel



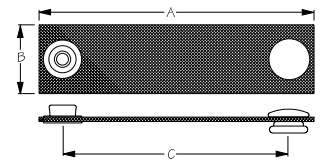
Bulk	Display	A	B	Wt.(lb.)	Std. Pack
n/a	299190-1	7-1/4"	2-7/8"	.40	1 ea

Canvas Snap Tool includes a die wrench and three removable dies for various snap caps and studs. Great addition to any tool box. Constructed of aluminum and steel. Not for use with heavy duty stainless canvas snaps.



## ADD-A-SNAP

Nickel Plated Brass/Nylon



Bulk	Display	A	B	C	Color	Wt.(lb.)	Std. Pack
n/a	299201B-1	1-1/2"	1"	11/16"	Black	.06	6 pr
n/a	299201W-1	1-1/2"	1"	11/16"	White	.06	6 pr
n/a	299202B-1	2-1/2"	1"	1-1/2"	Black	.07	6 pr
n/a	299202W-1	2-1/2"	1"	1-1/2"	White	.07	6 pr
n/a	299204B-1	4"	1"	3"	Black	.08	6 pr
n/a	299204W-1	4"	1"	3"	White	.08	6 pr

For use with canvas or nylon boat covers, the Add-A-Snap allows you to easily add length on hard to reach snaps from shrunken material. Nickel plated brass/nylon.

**⚠WARNING:** Cancer and Reproductive Harm - [www.P65Warnings.ca.gov](http://www.P65Warnings.ca.gov)

# DID YOU KNOW?

Sea-Dog offers a comprehensive line of rope, twine, and cordage for the marine industry, with **over 280 items** of assorted materials, sizes, and colors.



**Grey Cordage & Bungee Dock Lines!**