



# 3

Thimbles

Rings

Swivels

Pins

Turnbuckles

Webbing Slides  
& Straps

Hooks

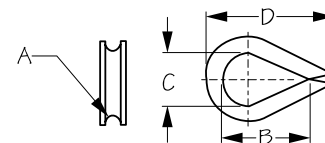
## Rigging Hardware





## HEAVY DUTY THIMBLE

Stamped 304 Stainless Steel



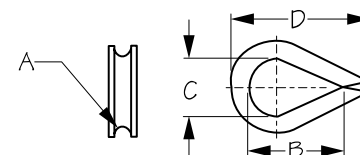
Bulk	Display	A (Wire Dia.)	B	C	D	Wt.(lb.)	Std. Pack
170002	170002-1	1/16"-3/32"	21/32"	3/8"	7/8"	.01 / .02	100 ea / 10 pr
170003	170003-1	1/8"	11/16"	3/8"	1"	.01 / .02	100 ea / 10 pr
170004	n/a	5/32"	13/16"	7/16"	1-1/8"	.01	100 ea
170005	170005-1	3/16"-7/32"	15/16"	1/2"	1-1/4"	.02 / .04	100 ea / 10 pr
170006	170006-1	1/4"	1-1/16"	19/32"	1-1/2"	.03 / .06	100 ea / 10 pr
170008	170008-1	5/16"	1-1/2"	7/8"	2"	.06	50 ea / 10 ea
170009	170009-1	3/8"	1-3/4"	15/16"	2-5/16"	.08	25 ea / 10 ea
170010	170010-1	7/16"	1-7/8"	1-1/8"	2-9/16"	.12	20 ea / 10 ea
170012	170012-1	1/2"	2-1/8"	1-1/8"	2-13/16"	.14	20 ea / 10 ea
170014	n/a	9/16"	2-1/4"	1-1/4"	3-1/16"	.22	10 ea
170016	170016-1	5/8"	2-5/8"	1-9/16"	3-7/16"	.29	10 ea
170020	170020-1	3/4"	3-7/16"	2"	4-1/4"	.63	10 ea
170022	n/a	7/8"	3-3/4"	2-3/16"	5"	.82	10 ea
170026	n/a	1"	4-1/2"	2-1/2"	5-15/16"	1.48	5 ea
170028	n/a	1-1/8"	5-1/4"	3"	6-13/16"	1.67	5 ea
170032	n/a	1-1/4"	5-1/8"	3-1/8"	8-1/16"	2.29	5 ea

These Heavy Duty Thimbles are used to protect wire or rope from contact with the load it is hoisting. The thimbles keep the eye splice from being crushed while reducing chafe and abrasion. Ideal for lines and running rigging. Constructed of corrosion resistant stamped 304 stainless steel.



## LIGHT DUTY THIMBLE

Stamped 304 Stainless Steel



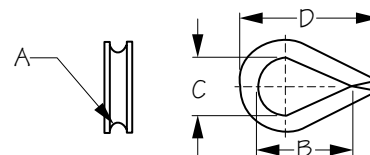
Bulk	Display	A (Wire Dia.)	B	C	D	Wt.(lb.)	Std. Pack
171206	n/a	1/4"	15/16"	1/2"	1-3/8"	.03	100 ea
171208	n/a	5/16"	1-5/16"	13/16"	1-7/8"	.05	50 ea
171210	n/a	3/8"	1-5/8"	1"	2-1/4"	.07	25 ea
171212	n/a	1/2"	1-15/16"	1-1/4"	2-5/8"	.09	25 ea
171216	n/a	5/8"	2-5/16"	1-1/2"	3-3/16"	.18	10 ea
171220	n/a	3/4"	2-5/8"	1-5/8"	3-9/16"	.25	10 ea

These Light Duty Thimbles are used to protect wire or rope from contact with the load it is hoisting. The thimbles keep the eye splice from being crushed while reducing chafe and abrasion. Ideal for general rigging applications. Constructed of corrosion resistant stamped 304 stainless steel.



## LIGHT DUTY THIMBLE

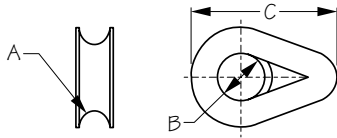
Stamped Steel Hot Dipped Galvanized



Bulk	Display	A (Wire Dia.)	B	C	D	Wt.(lb.)	Std. Pack
172006	n/a	1/4"	1-3/8"	11/16"	1-15/16"	.03	20 ea
172008	n/a	5/16"	1-9/16"	13/16"	2-1/8"	.07	20 ea
172010	n/a	3/8"	1-3/4"	7/8"	2-1/2"	.11	10 ea
172012	n/a	1/2"	1-7/8"	1-1/8"	2-3/4"	.16	10 ea
172016	n/a	5/8"	2-3/8"	1-3/8"	3-1/2"	.34	10 ea
172019	n/a	3/4"	2-5/8"	1-5/8"	3-3/4"	.51	10 ea
172022	n/a	7/8"	4-1/8"	2-7/16"	5-5/8"	.74	5 ea
172026	n/a	1"	4-1/4"	2-7/16"	5-5/8"	.86	5 ea

These Light Duty Thimbles are used to protect wire or rope from contact with the load it is hoisting. The thimbles keep the eye splice from being crushed while reducing chafe and abrasion. Ideal for anchor and mooring lines. Constructed of hot dipped galvanized stamped steel.

**⚠️WARNING:** Cancer and Reproductive Harm - [www.P65Warnings.ca.gov](http://www.P65Warnings.ca.gov)



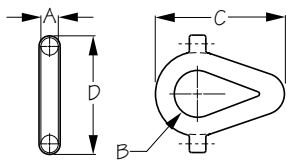
**THIMBLE**  
Injection Molded Nylon



Bulk	Display	Color	A (Rope Dia.)	B	C	Wt.(lb.)	Std. Pack
173571	n/a	Black	1/4"	9/16"	1-9/16"	.01	50 ea
173572	n/a	Black	5/16"	1"	2-11/16"	.02	25 ea
173573	n/a	Black	3/8"	1"	2-11/16"	.03	25 ea
173574	n/a	Black	1/2"	1"	2-7/8"	.04	20 ea
173576	n/a	Black	5/8"	1-1/16"	3-1/8"	.04	20 ea
173577	n/a	Black	3/4"	1-5/32"	3-9/16"	.07	10 ea
173579	n/a	Black	1"	1-3/4"	4-15/16"	.18	10 ea
173551	n/a	White	1/4"	9/16"	1-9/16"	.01	50 ea
173552	n/a	White	5/16"	1"	2-11/16"	.02	25 ea
173553	n/a	White	3/8"	1"	2-11/16"	.03	25 ea
173554	n/a	White	1/2"	1"	2-7/8"	.04	20 ea
173556	n/a	White	5/8"	1-1/16"	3-1/8"	.04	20 ea
173557	n/a	White	3/4"	1-5/32"	3-9/16"	.07	10 ea
173559	n/a	White	1"	1-3/4"	4-15/16"	.18	10 ea

These Thimbles are used to protect rope from contact with the load it is hoisting. The thimbles keep the eye splice from being crushed while reducing chafe and abrasion. Ideal for floating rope, pennants, and general rigging. Thimble size should match rope size. Constructed of UV resistant injection molded nylon.

**▲WARNING: Cancer and Reproductive Harm - www.P65Warnings.ca.gov**

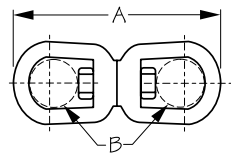


**THIMBLE WITH KEEPER**  
Injection Molded Nylon



Bulk	Display	A (Rope Dia.)	B	C	D	Wt.(lb.)	Std. Pack
174571	n/a	1/4"	11/16"	1-7/8"	1-5/8"	.01	50 ea
174574	n/a	1/2"	1-1/8"	2-15/16"	2-11/16"	.04	20 ea
174576	n/a	5/8"	1-3/16"	3-3/8"	3"	.04	20 ea

These Thimbles with Keepers are used to protect rope from contact with the load it is hoisting. The thimbles keep the eye splice from being crushed while reducing chafe and abrasion. Ideal for floating rope, pennants and general rigging. Integral keepers reduce possibility of rope becoming separated from thimble. Thimble size should match rope size. Constructed of UV resistant injection molded nylon.



**EYE & EYE SWIVEL**  
Forged Steel Hot Dipped Galvanized



Bulk	Display	Size	A	B	WLL (In Tons)	Wt.(lb.)	Std. Pack
181108	n/a	5/16"	4-1/4"	15/16"	3/4	.38	10 ea
181110	n/a	3/8"	5"	1-1/8"	1	.75	10 ea
181112	n/a	1/2"	6-1/2"	1-7/16"	1-1/2	1.42	10 ea
181116	n/a	5/8"	7-11/16"	1-9/16"	2	2.39	5 ea
181119	n/a	3/4"	8-7/8"	1-7/8"	4-3/4	3.66	5 ea

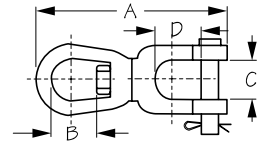
Eye & Eye Swivels link together two parts that have separate rotational directions, reducing knotting or twisting and relieving stress. Large eyes accommodate shackles for chain connections or eye splices with thimbles. Constructed of hot dipped galvanized forged steel.

**▲WARNING: Cancer and Reproductive Harm - www.P65Warnings.ca.gov**



## EYE & JAW SWIVEL

Forged Steel Hot Dipped Galvanized



Bulk	Display	Size	A	B	C	D	WLL (In Tons)	Wt.(lb.)	Std. Pack
181208	181208-1	5/16"	3-13/16"	7/8"	1/2"	7/8"	3/4	.38	10 ea
181210	181210-1	3/8"	4-9/16"	7/8"	5/8"	1"	1	.76	10 ea
181212	181212-1	1/2"	6"	1-7/16"	3/4"	1-1/4"	1-1/2	1.38	10 ea
181216	n/a	5/8"	7"	1-5/8"	7/8"	1-1/2"	2	2.23	5 ea
181219	n/a	3/4"	8"	1-11/16"	1-1/8"	1-3/4"	4-3/4	3.46	5 ea

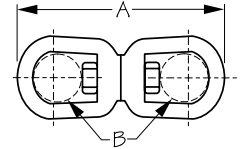
Eye & Jaw Swivels link together two parts that have separate rotational directions, reducing knotting or twisting and relieving stress. Constructed of hot dipped galvanized forged steel.

**▲WARNING: Cancer and Reproductive Harm - www.P65Warnings.ca.gov**



## EYE & EYE SWIVEL

Investment Cast 316 Stainless Steel



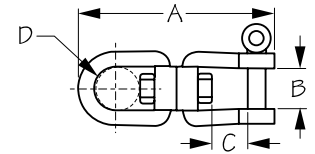
Bulk	Display	Size	A	B	Wt.(lb.)	Std. Pack
182106	n/a	1/4"	2-9/16"	9/16"	.11	10 ea
182108	n/a	5/16"	3-5/8"	13/16"	.30	10 ea
182110	n/a	3/8"	4-5/8"	15/16"	.58	10 ea
182112	n/a	1/2"	6"	1-3/16"	1.21	5 ea
182116	n/a	5/8"	7-5/16"	1-1/2"	2.00	1 ea
182119	n/a	3/4"	8-3/4"	1-9/16"	4.63	1 ea
182125	n/a	1"	11-1/2"	2-7/16"	9.88	1 ea

Eye & Eye Swivels link together two parts that have separate rotational directions, reducing knotting or twisting and relieving stress. Large eyes accommodate shackles for chain connections or eye splices with thimbles for anchor rods. Constructed of corrosion resistant investment cast 316 stainless steel. We do not load rate cast swivels.



## EYE & JAW SWIVEL

Investment Cast 316 Stainless Steel Body w/ 304 Stainless Steel Pin



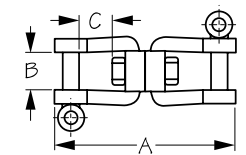
Bulk	Display	Size	A	B	C	D	Wt.(lb.)	Std. Pack
182206	182206-1	1/4"	2-9/16"	1/2"	7/16"	9/16"	.13	10 ea
182208	182208-1	5/16"	3-11/16"	5/8"	9/16"	13/16"	.34	10 ea
182210	182210-1	3/8"	4-5/8"	3/4"	7/8"	15/16"	.64	10 ea
182212	182212-1	1/2"	6"	1"	1-1/8"	1-3/16"	1.39	5 ea

Eye & Jaw Swivels link together two parts that have separate rotational directions, reducing knotting or twisting and relieving stress. Constructed of corrosion resistant investment cast 316 stainless steel. We do not load rate cast swivels.



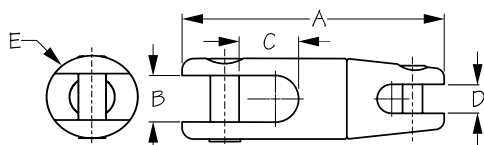
## JAW & JAW SWIVEL

Investment Cast 316 Stainless Steel Body w/ 304 Stainless Steel Pin



Bulk	Display	Size	A	B	C	Wt.(lb.)	Std. Pack
182306	182306-1	1/4"	2-9/16"	1/2"	1/2"	.15	10 ea
182308	182308-1	5/16"	3-11/16"	5/8"	5/8"	.36	10 ea
182310	182310-1	3/8"	4-5/8"	3/4"	7/8"	.73	10 ea
182312	182312-1	1/2"	6"	1"	1-1/16"	1.64	5 ea

Jaw & Jaw Swivels link together two parts that have separate rotational directions, reducing knotting or twisting and relieving stress. Constructed of corrosion resistant investment cast 316 stainless steel. We do not load rate cast swivels.



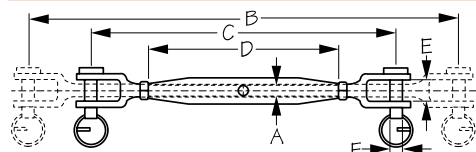
### ANCHOR SWIVEL

Investment Cast 316 Stainless Steel



Bulk	Display	A	B	C	D	E	Chain Sizes	B.S. (lb.)	Wt. (lb.)	Std. Pack
182608	182608-1	3-9/16"	5/8"	13/16"	13/32"	1-1/8"	1/4"-5/16"	5,500	.52	1 ea
182612	182612-1	4-11/16"	13/16"	1-1/16"	9/16"	1-5/8"	5/16"-1/2"	17,000	1.17	1 ea
182614	n/a	5-1/2"	1-1/8"	1-3/16"	5/8"	2"	1/2"-5/8"	21,500	2.54	1 ea

Anchor Swivels are designed to easily slide over anchor rollers, preventing snagging, minimizing wear on the bow roller and windlass. These precision, high quality swivels feature double locking pins for extra security. Can be used between anchor and chain or between chain and line. Constructed of corrosion resistant investment cast AISI 316 stainless steel. Pin threads must be coated with Blue Loctite or Anti-seize to prevent galling. Hex wrench for 182608 & 182612 is 4 mm, 182614 is 5 mm, wrenches not included.



### JAW & JAW TURNBUCKLE

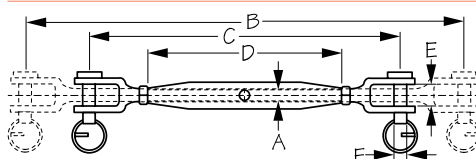
Machined 316 Stainless Steel



Bulk	Display	A (Threads)	B	C	D	E	F	B.S. (lb.)	Wt. (lb.)	Std. Pack
185105	n/a	5 mm-.80 mm	7-1/16"	4-3/4"	3-1/8"	1/4"	3/16"	1,980	.11	1 ea
185106	n/a	1/4"-28	8-1/4"	5-15/16"	3-9/16"	3/8"	1/4"	2,860	.22	1 ea
185108	n/a	5/16"-24	9-7/8"	6-7/8"	4-5/16"	7/16"	5/16"	5,500	.33	1 ea
185110	n/a	3/8"-24	11"	7-7/8"	4-3/4"	1/2"	3/8"	7,700	.55	1 ea
185112	n/a	1/2"-20	14-9/16"	9-5/8"	5-15/16"	9/16"	1/2"	11,880	1.15	1 ea
185116	n/a	5/8"-18	17-1/8"	12-3/16"	7-1/2"	7/8"	9/16"	17,600	2.20	1 ea

Jaw & Jaw Turnbuckles are used for adjusting the tension and/or length of ropes and cables. They consist of two threaded bolts screwed into each end of a metal body, one with left-hand thread and the other with right-hand thread. The tension can be adjusted by rotating the body, causing both bolts to be screwed in or out simultaneously, without twisting the bolts or attached cables. All thread sizes and wire rope sizes now conform to U.S. standards and are interchangeable with most other U.S. manufacturers. 185105 has 5 mm metric threads. Constructed of corrosion resistant machined AISI 316 stainless steel with an electropolished bright finish.

Turnbuckles should be lubricated before their first use and regularly thereafter. They should also be regularly rinsed with fresh water and inspected for signs of damage such as bent terminals or cracking at thread roots or end of thread. End fittings should be checked to ensure uninhibited universal movement.



### JAW & JAW TURNBUCKLE

Machined 316 Stainless Steel



Bulk	Display	A (Threads)	B	C	D	E	F	B.S. (lb.)	Wt. (lb.)	Std. Pack
185505	n/a	5 mm-.80 mm	7-1/16"	4-13/16"	3-3/16"	1/4"	3/16"	1,980	.09	1 ea
185506	n/a	6 mm-1.00 mm	8-3/8"	5-1/2"	3-9/16"	5/16"	1/4"	2,860	.21	1 ea
185508	n/a	8 mm-1.25 mm	9-3/4"	6-3/8"	4-1/4"	1/2"	5/16"	5,500	.35	1 ea
185510	n/a	10 mm-1.50 mm	11-3/4"	7-7/8"	4-7/8"	1/2"	3/8"	7,700	.60	1 ea
185512	n/a	12 mm-1.75 mm	14-1/2"	9-5/8"	5-7/8"	5/8"	7/16"	12,000	1.00	1 ea
185514	n/a	14 mm-2.00 mm	16-1/4"	10-3/4"	6-5/8"	5/8"	1/2"	17,600	1.54	1 ea
185516	n/a	16 mm-2.00 mm	18-1/4"	12"	7-1/2"	11/16"	5/8"	28,600	2.11	1 ea
185519	n/a	20 mm-2.50 mm	19-1/2"	13-1/2"	8-5/16"	3/4"	3/4"	35,000	3.61	1 ea

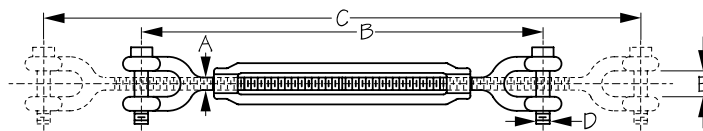
Jaw & Jaw Turnbuckles are used for adjusting the tension and/or length of ropes and cables. They consist of two threaded bolts screwed into each end of a metal body, one with left-hand thread and the other with right-hand thread. The tension can be adjusted by rotating the body, causing both bolts to be screwed in or out simultaneously, without twisting the bolts or attached cables. These Jaw & Jaw Turnbuckles feature Metric threads. Constructed of corrosion resistant machined AISI 316 stainless steel and features an electropolished bright finish.

Turnbuckles should be lubricated before their first use and regularly thereafter. They should also be regularly rinsed with fresh water and inspected for signs of damage such as bent terminals or cracking at thread roots or end of thread. End fittings should be checked to ensure uninhibited universal movement.



## JAW & JAW TURNBUCKLE

Forged Steel Hot Dipped Galvanized



Bulk	Display	A (Threads)	B	C	D	E	Wt.(lb.)	Std. Pack
186100	n/a	1/4"-28	7-1/2"	11-1/2"	1/4"	3/8"	.40	10 ea
186110	n/a	5/16"-24	8-7/8"	13-1/4"	1/4"	1/2"	.57	10 ea
186121	n/a	3/8"-24	10-1/2"	16-1/2"	5/16"	1/2"	.93	10 ea
186131	n/a	1/2"-20	12-1/2"	18-1/2"	3/8"	5/8"	1.68	10 ea

Jaw & Jaw Turnbuckles are used for adjusting the tension and/or length of ropes and cables. They consist of two threaded bolts screwed into each end of a metal body, one with left-hand thread and the other with right-hand thread. The tension can be adjusted by rotating the body, causing both bolts to be screwed in or out simultaneously, without twisting the bolts or attached cables. Constructed of hot dipped galvanized forged steel for corrosion resistance.

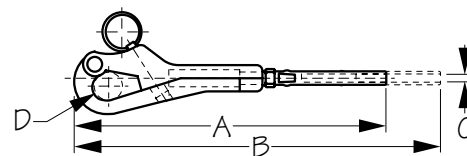
Turnbuckles should be lubricated before their first use and regularly thereafter. They should also be regularly rinsed with fresh water and inspected for signs of damage such as bent terminals or cracking at thread roots or end of thread. End fittings should be checked to ensure uninhibited universal movement.

**⚠WARNING: Cancer and Reproductive Harm - www.P65Warnings.ca.gov**



## PELICAN HOOK

Investment Cast 316 Stainless Steel



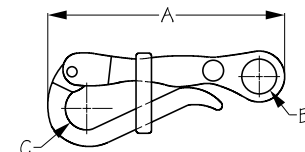
Bulk	Display	A	B	C (End Fitting)	D	Thread	Wt.(lb.)	Std. Pack
189700	n/a	3-15/16"	Body Only	n/a	5/8"	5/16"-24 RH	.31	10 ea
189705	n/a	6-7/8"	8-3/8"	3/16" Wire	5/8"	5/16"-24 RH	.41	5 ea

These Pelican Hooks open with a pull of the quick release plunger, then close automatically when pressed shut. Capable of being released under load, these hooks are used as a removable fastener where a gate is required. Available in 5/16"-24 UNF right-hand thread direction only. For use with 3/16" wire. Constructed of corrosion resistant investment cast 316 stainless steel. 189705 includes both swage terminal and locknut.



## PELICAN HOOK

Sand Cast Bronze



Bulk	Display	A	B	C	Finish	Wt.(lb.)	Std. Pack
189780	n/a	4"	1/2"	3/8"	Bronze	.22	10 ea

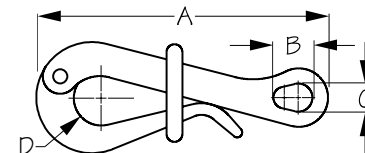
This Pelican Hook features a hinged link that can be quickly secured or released by a sliding ring. Capable of being released under load, these hooks are used as a removable fastener where a gate is required. Eye allows line to be spliced directly to the hook or attached by way of a turnbuckle fork. Constructed of durable sand cast bronze.

**⚠WARNING: Cancer and Reproductive Harm - www.P65Warnings.ca.gov**



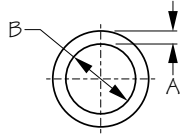
## PELICAN HOOK

Investment Cast 316 Stainless Steel



Bulk	Display	A	B	C	D	Wt.(lb.)	Std. Pack
189785	189785-1	4"	1/2"	3/8"	3/4"	.23	10 ea

This Pelican Hook features a hinged link that can be quickly secured or released by a sliding ring. Capable of being released under load, these hooks are used as a removable fastener where a gate is required. Eye allows line to be spliced directly to the hook or attached by way of a turnbuckle fork. Constructed of corrosion resistant investment cast 316 stainless steel.

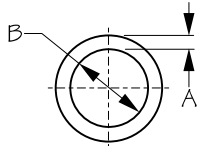


**ROUND RING**  
Injection Molded Nylon



Bulk	Display	A	B	Color	Wt.(lb.)	Std. Pack
190580	n/a	3/8"	2"	Black	.03	20 ea
190583	n/a	9/32"	1-1/4"	Black	.01	20 ea
190570	n/a	3/8"	2"	White	.03	20 ea
190571	n/a	5/16"	1-1/2"	White	.02	20 ea
190573	n/a	9/32"	1-1/4"	White	.01	20 ea
190579	n/a	1/4"	1"	White	.01	20 ea

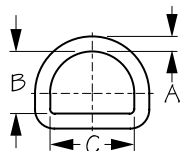
**⚠WARNING:** Cancer and Reproductive Harm - [www.P65Warnings.ca.gov](http://www.P65Warnings.ca.gov)



**ROUND RING**  
Formed 304 Stainless Steel



Bulk	Display	A	B	B.S. (lb.)	WLL (lb.)	Wt.(lb.)	Std. Pack
191207	n/a	1/8"	3/4"	650	162	.02	10 ea
191307	n/a	3/16"	3/4"	1,000	250	.03	10 ea
191310	n/a	3/16"	1"	1,000	250	.03	10 ea
191312	n/a	3/16"	1-3/16"	1,000	250	.04	10 ea
191410	n/a	1/4"	1"	2,700	675	.05	10 ea
191412	n/a	1/4"	1-1/4"	2,700	675	.06	10 ea
191415	n/a	1/4"	1-1/2"	2,700	675	.08	10 ea
191512	n/a	5/16"	1-1/4"	5,000	1,250	.11	10 ea
191515	n/a	5/16"	1-1/2"	5,000	1,250	.13	10 ea
191517	n/a	5/16"	1-3/4"	5,000	1,250	.15	10 ea
191520	n/a	5/16"	2"	5,000	1,250	.16	10 ea
191522	n/a	5/16"	2-1/4"	5,000	1,250	.18	10 ea
191620	n/a	3/8"	2"	6,200	1,550	.20	10 ea
191625	n/a	3/8"	2-1/2"	6,200	1,550	.24	10 ea
191632	n/a	3/8"	3-1/4"	6,200	1,550	.31	10 ea
191725	n/a	7/16"	2-1/2"	8,500	2,125	.38	10 ea



**D-RING**  
Formed 304 Stainless Steel



Bulk	Display	A	B	C	Wt.(lb.)	Std. Pack
191830	n/a	3/16"	15/16"	1-1/16"	.03	10 ea
191831	n/a	3/16"	1-1/2"	1-3/4"	.06	10 ea
191832	n/a	3/16"	2"	2-3/8"	.08	10 ea
191840	n/a	1/4"	1-5/16"	1-1/2"	.06	10 ea
191841	n/a	1/4"	1-3/4"	2"	.08	10 ea
191842	n/a	1/4"	2-1/8"	2-3/8"	.11	10 ea
191843	n/a	1/4"	2-3/8"	2-3/4"	.13	10 ea
191851	n/a	5/16"	1-3/4"	2"	.12	10 ea
191852	n/a	5/16"	2-3/8"	2-3/4"	.20	10 ea
191853	n/a	5/16"	2-5/8"	3-1/8"	.25	10 ea

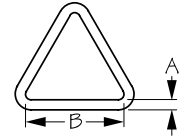
D-Rings are used primarily as a lashing point for light loads or tie-down applications. Used in conjunction with a metal pad eye they are ideal for attaching ropes, chains, or straps. Constructed of corrosion resistant formed 304 stainless steel.





## TRIANGLE RING

Formed 304 Stainless Steel

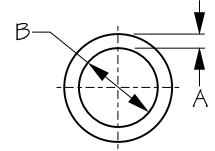


Bulk	Display	A	B	Wt.(lb.)	Std. Pack
191921	n/a	1/8"	1-1/8"	.02	10 ea
191943	n/a	1/4"	1-1/2"	.08	10 ea
191953	n/a	5/16"	2"	.16	10 ea



## ROUND RING

Die Cast Manganese Bronze



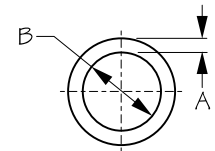
Bulk	Display	A	B	Wt.(lb.)	Std. Pack
192027	n/a	3/16"	1-1/16"	.03	10 ea
192029	n/a	3/16"	1-1/8"	.04	10 ea
192038	n/a	1/4"	1-1/2"	.07	10 ea

**⚠WARNING: Cancer and Reproductive Harm - www.P65Warnings.ca.gov**



## ROUND RING

Formed Steel Hot Dipped Galvanized



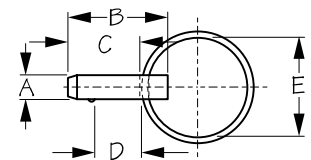
Bulk	Display	A	B	Wt.(lb.)	Std. Pack
192415	n/a	1/4"	1-1/2"	.09	10 ea
192420	n/a	1/4"	2"	.11	10 ea
192425	n/a	1/4"	2-1/2"	.13	10 ea
192520	n/a	5/16"	2"	.17	10 ea
192525	n/a	5/16"	2-1/2"	.18	10 ea
192530	n/a	5/16"	3"	.19	10 ea
192625	n/a	3/8"	2-1/2"	.21	10 ea
192630	n/a	3/8"	3"	.30	10 ea
192830	n/a	1/2"	3"	.70	10 ea
192840	n/a	1/2"	4"	.80	10 ea
192940	n/a	5/8"	4"	1.34	10 ea
192950	n/a	5/8"	5"	1.63	10 ea

**⚠WARNING: Cancer and Reproductive Harm - www.P65Warnings.ca.gov**



## RELEASE PIN

Formed 304 Stainless Steel

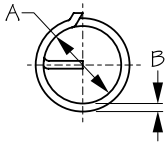


Bulk	Display	A	B	C	D	E	Wt.(lb.)	Std. Pack
193410	193410-1	1/4"	1"	3/4"	7/16"	1"	.02 / .04	10 ea / 10 pr
193415	193415-1	1/4"	1-1/2"	1-1/4"	7/8"	1"	.03 / .06	10 ea / 10 pr
193420	193420-1	1/4"	2-1/16"	1-7/8"	1-1/2"	1"	.04 / .08	10 ea / 10 pr
193425	193425-1	1/4"	2-1/2"	2-3/16"	1-15/16"	1"	.04 / .08	10 ea / 10 pr

Standard duty detent Release Pins are ideal for basic holding and removal applications that don't require a positive locking ball feature. These quick release pins are activated by a push or pull motion. The detent ball depresses and springs up for "quick release" applications. This robust, durable design is suitable for repetitive-use applications. Ideal for anchor clevis fittings, hinge pins, or to replace cotter pins where frequent removal is necessary. Includes split ring for attachment of optional lanyard. Constructed of corrosion resistant formed 304 stainless steel. Deck Hinge (pictured below) not included.





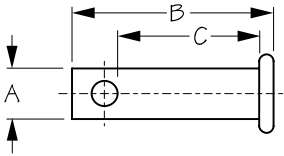


**SPLIT RING**

Formed 316 Stainless Steel



Bulk	Display	A	B	Pcs. Per Set	Wt.(lb.)	Std. Pack
193561	n/a	11/32"	1/32"	n/a	.01	20 ea
193562	193562-1	15/32"	1/16"	4	.01 / .04	20 ea / 10 sets
193563	193563-1	5/8"	1/16"	4	.01 / .04	20 ea / 10 sets
193564	193564-1	3/4"	3/32"	3	.01 / .03	20 ea / 10 sets

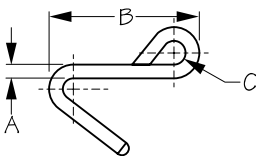


**CLEVIS PIN**

Formed 316 Stainless Steel



Bulk	Display	A	B	C	Wt.(lb.)	Std. Pack
193605	193605-1	3/16" - 5 mm	3/4"	9/16"	.01	10 ea
193606	193606-1	1/4" - 6 mm	7/8"	5/8"	.01	10 ea
193608	193608-1	5/16" - 8 mm	1"	3/4"	.03	10 ea
193610	193610-1	3/8" - 10 mm	1-1/8"	7/8"	.04	10 ea
193611	193611-1	7/16" - 11 mm	1-5/16"	15/16"	.05	10 ea
193612	193612-1	1/2" - 12 mm	1-3/8"	1"	.33	10 ea
193614	193614-1	9/16" - 13 mm	1-3/4"	1-7/16"	.43	10 ea

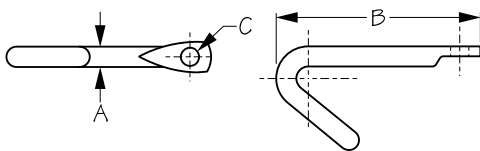


**CUNNINGHAM HOOK**

Formed 304 Stainless Steel



Bulk	Display	A	B	C	Wt.(lb.)	Std. Pack
195110	195110-1	1/4"	2-9/16"	7/16"	.09	10 ea

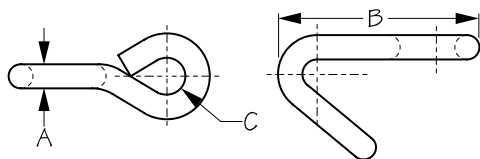


**LASHING HOOK**

Formed 304 Stainless Steel



Bulk	Display	A	B	C	Wt.(lb.)	Std. Pack
195210	195210-1	5/16"	2-3/4"	1/4"	.11	10 ea

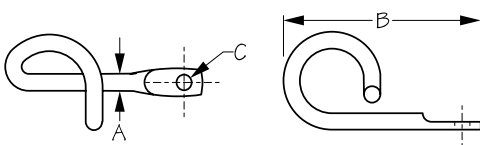


**REEFING HOOK**

Formed 304 Stainless Steel



Bulk	Display	A	B	C	Wt.(lb.)	Std. Pack
195310	195310-1	5/16"	2-1/2"	1/2"	.09	10 ea
195320	195320-1	3/8"	3-1/2"	1/2"	.23	10 ea



**MAIN SAIL HOOK**

Formed 304 Stainless Steel

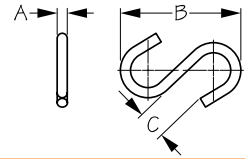


Bulk	Display	A	B	C	Wt.(lb.)	Std. Pack
195410	195410-1	5/16"	3-3/4"	1/4"	.17	10 ea



## S-HOOK

Formed 304 Stainless Steel

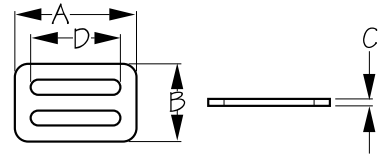


Bulk	Display	A	B	C	Wt.(lb.)	Std. Pack
198105	198105-1	3/16"	2-3/16"	5/8"	.03	10 ea



## WEBBING SLIDE

Stamped 304 Stainless Steel

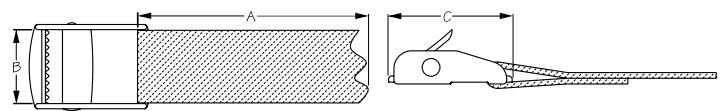


Bulk	Display	A	B	C	D	Wt.(lb.)	Std. Pack
199011	n/a	1-3/8"	7/8"	1/16"	1"	.01	10 ea
199012	n/a	2-1/2"	1-1/4"	1/16"	2"	.04	10 ea
199013	n/a	2-1/2"	1-1/4"	1/8"	2"	.06	10 ea



## WEBBING CAM BUCKLE STRAP

Cast 304 Stainless Steel/Nylon Webbing



Bulk	Display	A	B	C	Type	Wt.(lb.)	Std. Pack
199101	199101-1	Buckle Only	1"	1-3/4"	Light Duty	.08	10 ea
199102	199102-1	Buckle Only	1"	1-3/4"	Heavy Duty	.10	10 ea
199121	199121-1	8 Feet	1"	1-3/4"	Light Duty	.35	10 ea
199122	199122-1	8 Feet	1"	1-3/4"	Heavy Duty	.37	10 ea

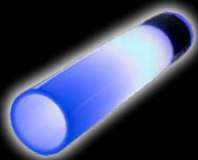
These Webbing Cam Buckle Straps are 8' long. The light duty buckle has a working load limit of 550 pounds and the heavy duty buckle has a working load limit of 880 pounds. Buckles available with or without webbing strap attached. Constructed of corrosion resistant cast 304 stainless steel with a nylon webbing strap.



## LED Rod Holder

325181-1

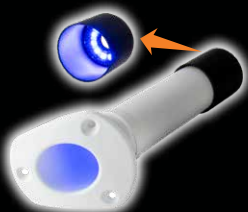
This patented LED RGB Rod Holder features a translucent tube insert with bright RGB LEDs.



## LED Tube Insert

325189-1

Retrofit your existing rod holder by removing your existing liner, installing the tube insert and cutting it to your mounting face angle.



## LED Rod Holder Cap Light

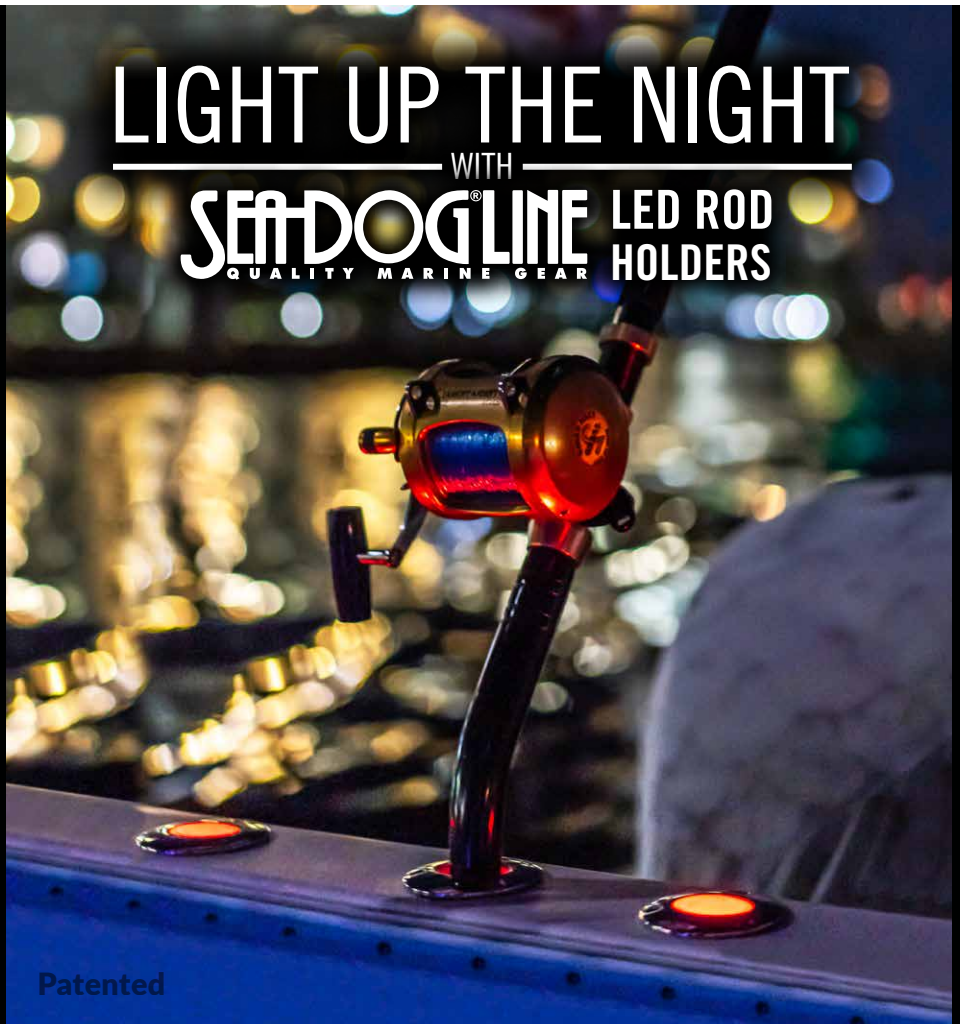
325188-1

This patented LED RGB Rod Holder Cap attaches on the bottom of any 2" diameter rod holder.



## Bluetooth Smartphone Controller, 403051-1

Allows you to operate LED lights with an app on your smartphone. Numerous color changing modes with adjustable speed and brightness levels. Also includes six timer settings, music sync, color change via phone shake, and photo color match.



# LIGHT UP THE NIGHT

WITH

## SEADOGLINE<sup>®</sup> LED ROD HOLDERS

QUALITY MARINE GEAR

HOLDERS

Patented